

# CONTENTS

## ENGINE

CYLINDER .....	B2
CRANKSHAFT. PISTON .....	B3
OIL PUMP .....	B4
INTAKE .....	B5
CARRURETOR .....	B6 - B7
EXHAUST .....	B8
CRANKCASE .....	B9
CRANKCASE COVER 1 .....	B10
STARTER .....	B11
CLUTCH .....	B12 - B13
TRANSMISSION .....	B14
SHIFT CAM. FORK .....	B15
SHIFT SHAFT .....	C2

## CHASSIS

FRAME .....	C3
FENDER .....	C4
SIDE COVER .....	C5
OIL TANK .....	C6
REAR ARM .....	C7

REAR SUSPENSION .....	C8
STEERING .....	C9-C10
FRONT FORK .....	C11
FUEL TANK .....	C12-C13
SEAT .....	C14
FRONT WHEEL .....	C15
FRONT BRAKE CALIPER .....	D2
REAR. WHEEL .....	D3-D4
STEERING HANDLE. CABLE .....	D5
FRONT MASTER CYLINDER .....	D6
STAND. FOOTREST .....	D7
COWLING 1 .....	D8
GENERATOR .....	D9
FLASHER LIGHT .....	D10
METER .....	D11
HEADLIGHT .....	D12
TAILLIGHT .....	D13
HANDLE SWITCH. LEVER .....	D14
ELECTRICAL 1 .....	D15-E2

## INDEX

NUMERICAL INDEX .....	M1 ~M2
-----------------------	--------



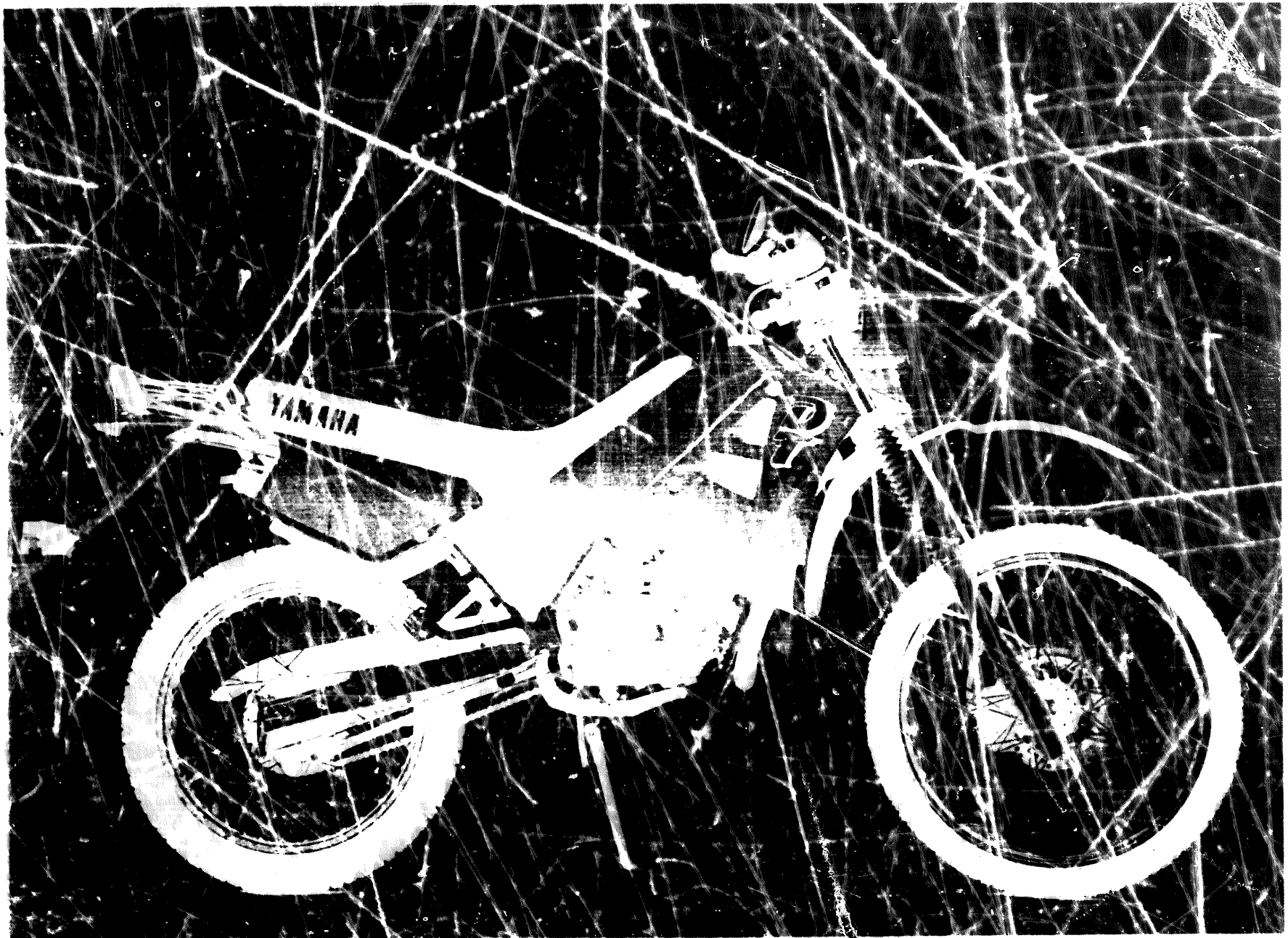
**PARTS CATALOGUE**

**DT50R'92 (4AD2)**

**SWEDEN**

**224AD-322E1**

**A2**



A3

# FOREWORD

This Parts Catalogue is related to the parts in use for the Yamaha DT50R.

When you are ordering replacement parts for the DT50R, refer to this Parts Catalogue and quote both part numbers and part names correctly.

1. Modifications or additions which have been made after issue of the Parts Catalogue will be announced in the Yamaha Parts News.

It is advisable that according to the Yamaha Parts News you make necessary corrections to the Parts Catalogue on hand to keep it up-to-date.

## 2. Abbreviations

The following abbreviations are used in this Parts Catalogue.

M.P. Use size (thickness) and/or number as required.

U.N. Use as many as you need.

A.P. Alternate Parts

L.M. Local Made

F# Frame No. (Applicable machine No.)

3. The parts marked with (+) in the parts number column of this Catalogue are not supplied with by Yamaha, these have to be found locally.

4. Parts, which are to be supplied in the form of assemblies, are listed with an indentation of one letter's space, and a dot (.) is put against the name of each part.

**EXAMPLE** CARBURETOR ASS'Y  
     . JET, pilot  
     . NOZZLE, main

## 5. Indication of No. of constituent parts for assembly

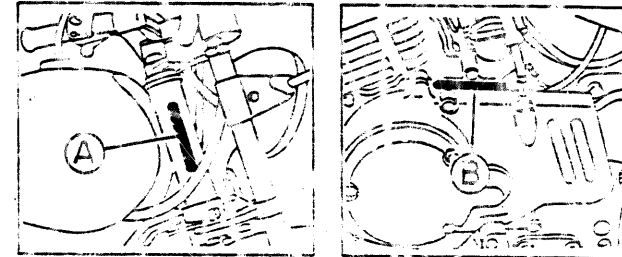
The numeral appearing to the right of each constituent part under the description indicates the quantity of such parts for each individual assembly unit.

**EXAMPLE**

Part No.	Description	Qty	Remarks
3KL-F3310-00	FRONT FLASHER LIGHT ASS'Y	2	
3KL-F3331-00	BULB 12V-10W	1	

## 6. Initial Serial No. and Color Code

(A) Frame Serial No.	4AD-00001 and following
(B) Engine Serial No.	4AD-000101 and following



Color Code	Color Name	Abbreviate
	PURPLISH WHITE YAMAHA BLACK DEEP VIOLET	

7. Applicable colors or graphics are represented in the "Remarks" column by the letter(s) appropriately picked out of the full word(s) shown in such colors.

**EXAMPLE**

Part No.	Description	Qty	Remarks
3HL-F4110-00-17	FUEL TANK COMP.	1	SEBD
3HL-F4248-30	GRAPHIC	1	FOR WHITE



# CONTENTS

## ENGINE

CYLINDER .....	B2
CRANKSHAFT. PISTON .....	B3
OIL PUMP .....	B4
INTAKE .....	B5
CARBURETOR .....	B6 - B7
EXHAUST .....	B8
CRANKCASE .....	B9
CRANKCASE COVER 1 .....	B10
STARTER .....	B11
CLUTCH .....	B12 - B13
TRANSMISSION .....	B14
SHIFT CAM. FORK .....	B15
SHIFT SHAFT .....	C2

## CHASSIS

FRAME .....	C3
FENDER .....	C4
SIDE COVER .....	C5
OIL TANK .....	C8
REAR ARM .....	C7

REAR SUSPENSION .....	C8
STEERING .....	C9-C10
FRONT FORK .....	C11
FUEL TANK .....	C12-C13
SEAT .....	C14
FRONT WHEEL .....	C15
FRONT BRAKE CALIPER .....	D2
REAR. WHEEL .....	D3-D4
STEERING HANDLE. CABLE .....	D5
FRONT MASTER CYLINDER .....	D6
STAND. FOOTREST .....	D7
COWLING 1 .....	D8
GENERATOR .....	D9
FLASHER LIGHT .....	D10
METER .....	D11
HEADLIGHT .....	D12
TAILLIGHT .....	D13
HANDLE SWITCH. LEVER .....	D14
ELECTRICAL 1 .....	D15-E2

## INDEX

NUMERICAL INDEX .....	M1 ~M2
-----------------------	--------

FIG. 1 CYLINDER

REF	PART NO	DESCRIPTION	QTY	REMARKS
1	5M3-11111-00	HEAD CYLINDER 1	1	
2	5J1-11161-00	ABSORBER 1	1	
3	427-11161-00	ABSORBER 1	3	
4	1T9-11161-00	ABSORBER 1	1	
5	102-11181-01	GASKET, CYLINDER HEAD 1	1	
6	94701-00248	PLUG, SPARK (NGK)	1	
7	4AD-11311-00	CYLINDER 1	1	
8	4AD-11351-00	GASKET, CYLINDER	1	
9	90116-06026	BOLT, STUD	3	
10	4AD-11179-00	BOLT, STUD	1	
11	95303-06600	NUT	4	
12	92901-06200	WASHER, PLAIN	4	

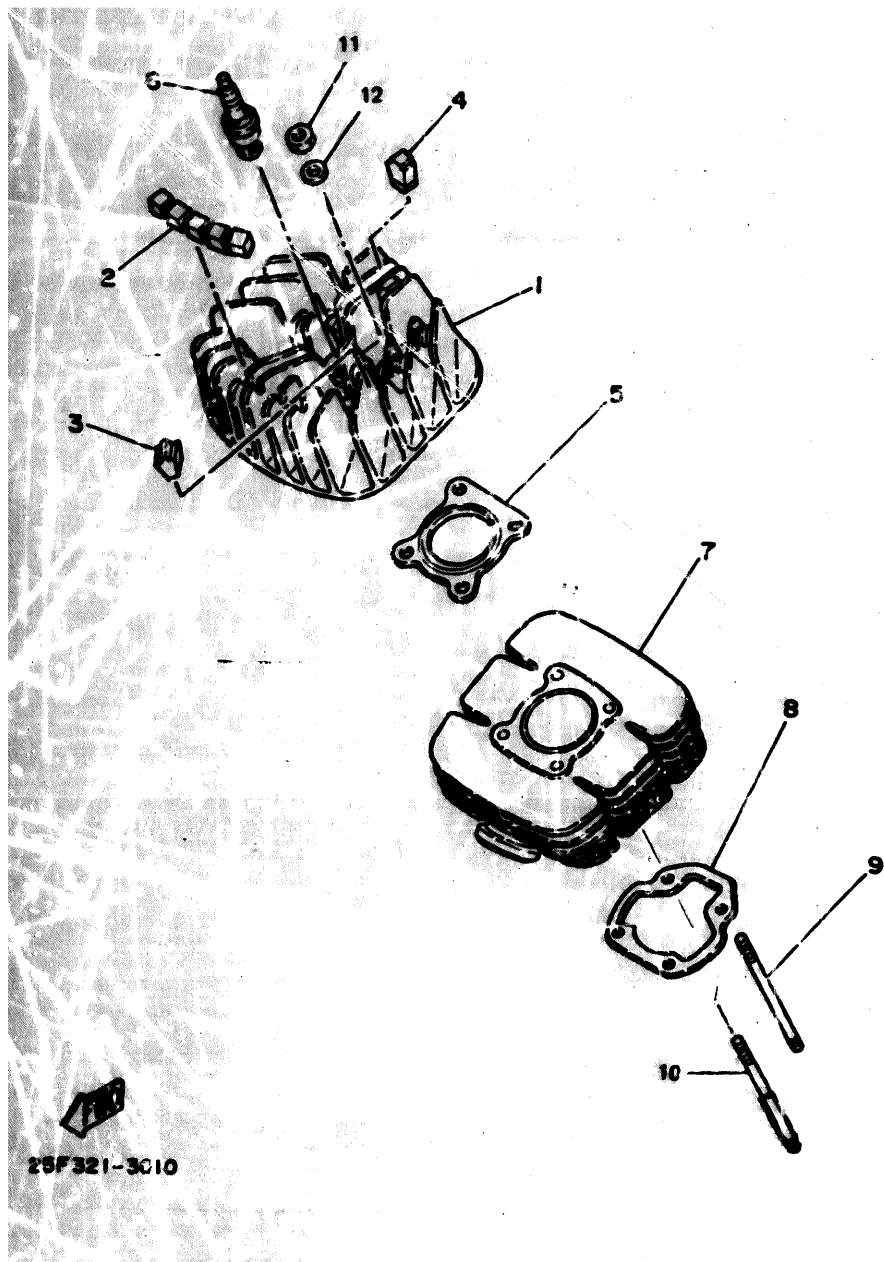
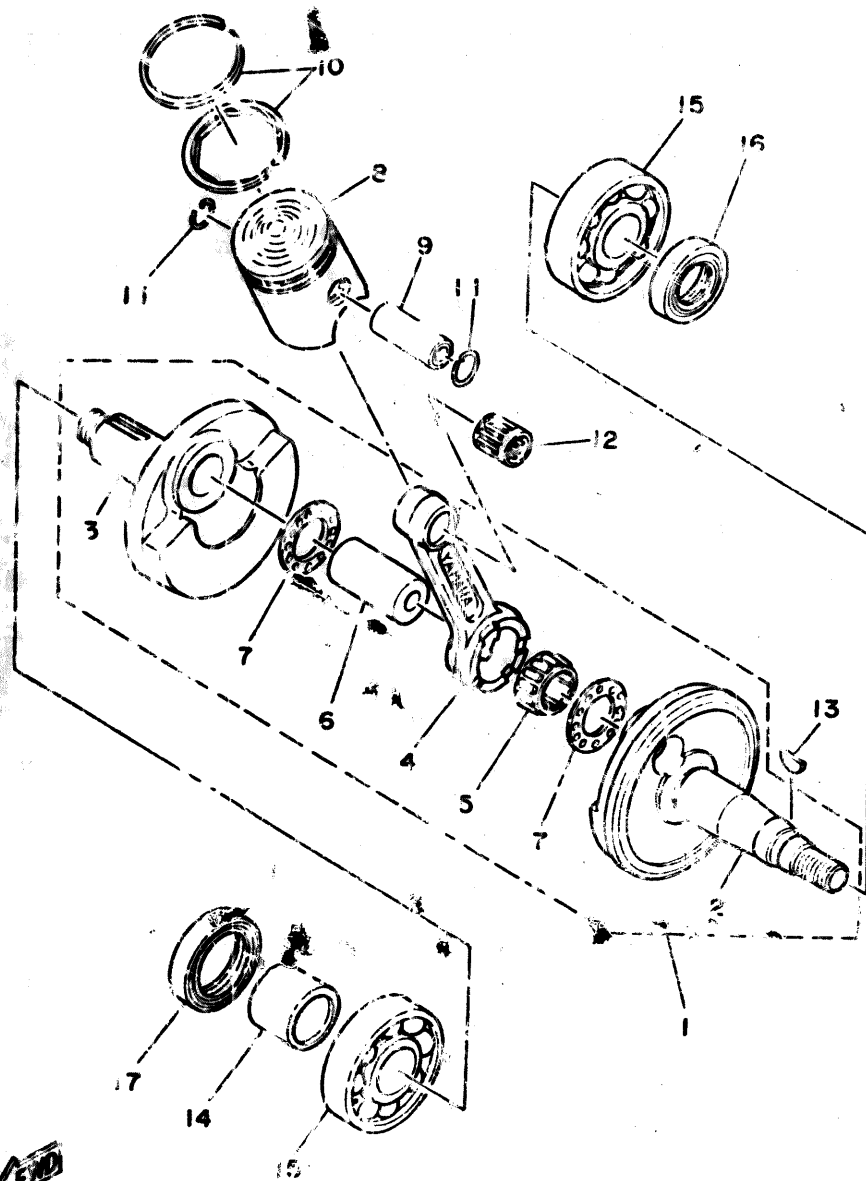


FIG. 2 CRANKSHAFT PISTON



REF	PART NO	DESCRIPTION	QTY	REMARKS
1	2U2-11400-00	CRANKSHAFT ASSY	1	
2	2U2-11412-00	.CRANK 1	1	
3	2U2-11422-00	.CRANK 2	1	
4	3R1-11651-01	.ROD, CONNECTING	1	
5	93310-418TL	.BEARING, CYLINDRICAL	1	
6	257-11681-00	.PIN, CRANK 1	1	
7	90209-18111	.WASHER	2	
8	5L3-11631-00-96	PISTON (STD)	1	
	5L3-11635-00	PISTON (0.25MM O/S)	1	
	5L3-11636-00	PISTON (0.50MM O/S)	1	
9	517-11633-00	PIN, PISTON	1	
10	260-11601-02	PISTON RING SET (STD)	1	
	260-11601-12	PISTON RING SET 1ST OS	1	
	260-11601-22	PISTON RING SET 0.5 MM	1	
11	91450-13022	CIRCLIP	2	
12	91210-11268	BEARING, CYLINDRICAL	1	
13	90280-03611	KEY, WOODRUFF	1	
14	90367-205E9	COLLAR	1	
15	93306-20458	BEARING	2	
16	93102-20000	OIL SEAL	1	
17	93103-18011	OIL SEAL	1	

1MK3-2-50.0

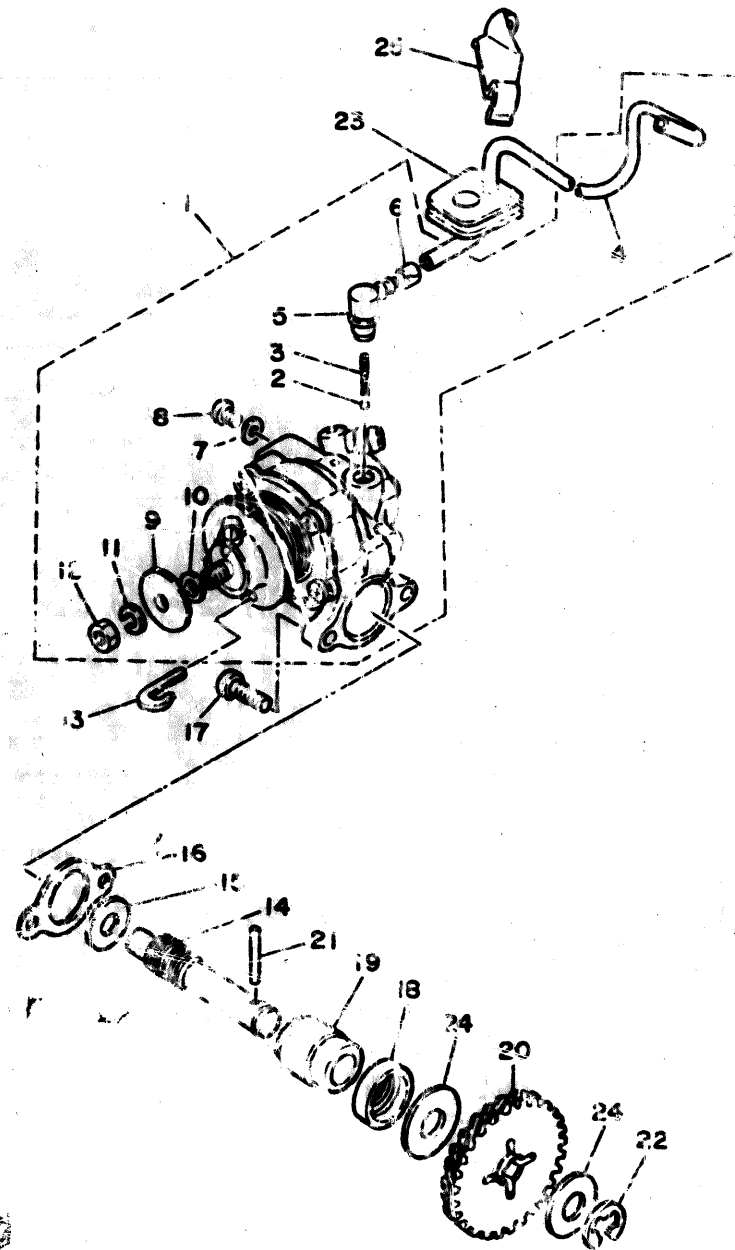


FIG. 3 OIL PUMP

REF	PART NO	DESCRIPTION	QTY	REMARKS
1	29J-13101-00	OIL PUMP ASSY	1	
2	93505-92002	BALL	1	
3	90501-02207	SPRING, COMPRESSION	1	
4	90405-05208	HOSE	1	
5	353-13552-01	NOZZLE	1	
6	90468-02003	CLIP	1	
7	90400-04004	GASKET	1	
8	98901-04003	SCREW, NYLON	1	
9	137-13138-01	PLATE, MOUNTING	1	
10	137-13137-00-10	FLIM (1.6T)	1	
11	92901-05100	WASHER, SPRING	1	
12	95303-05600	NUT	1	
13	367-13146-01	CLIP	1	
14	2A3-13175-00	SHAFT, WORM	1	
15	90201-08624	WASHER, PLATE	1	
16	3M1-13116-00	GASKET, PUMP CASE	1	
17	98580-05014	SCREW, PAN HEAD	2	
18	93101-10090	OIL SEAL	1	
19	1E7-13176-00	METAL WORM SHAFT OUTER	1	
20	353-13178-00	GEAR, PUMP DRIVE (20T)	1	
21	93503-22008	PIN, DOWEL	1	
22	99011-03600	CLIP	2	
23	248-13174-00	HOLDER, OIL PIPE		
24	90201-10504	WASHER, PLATE	2	
25	357-13174-00	HOLDER, OIL PIPE	1	

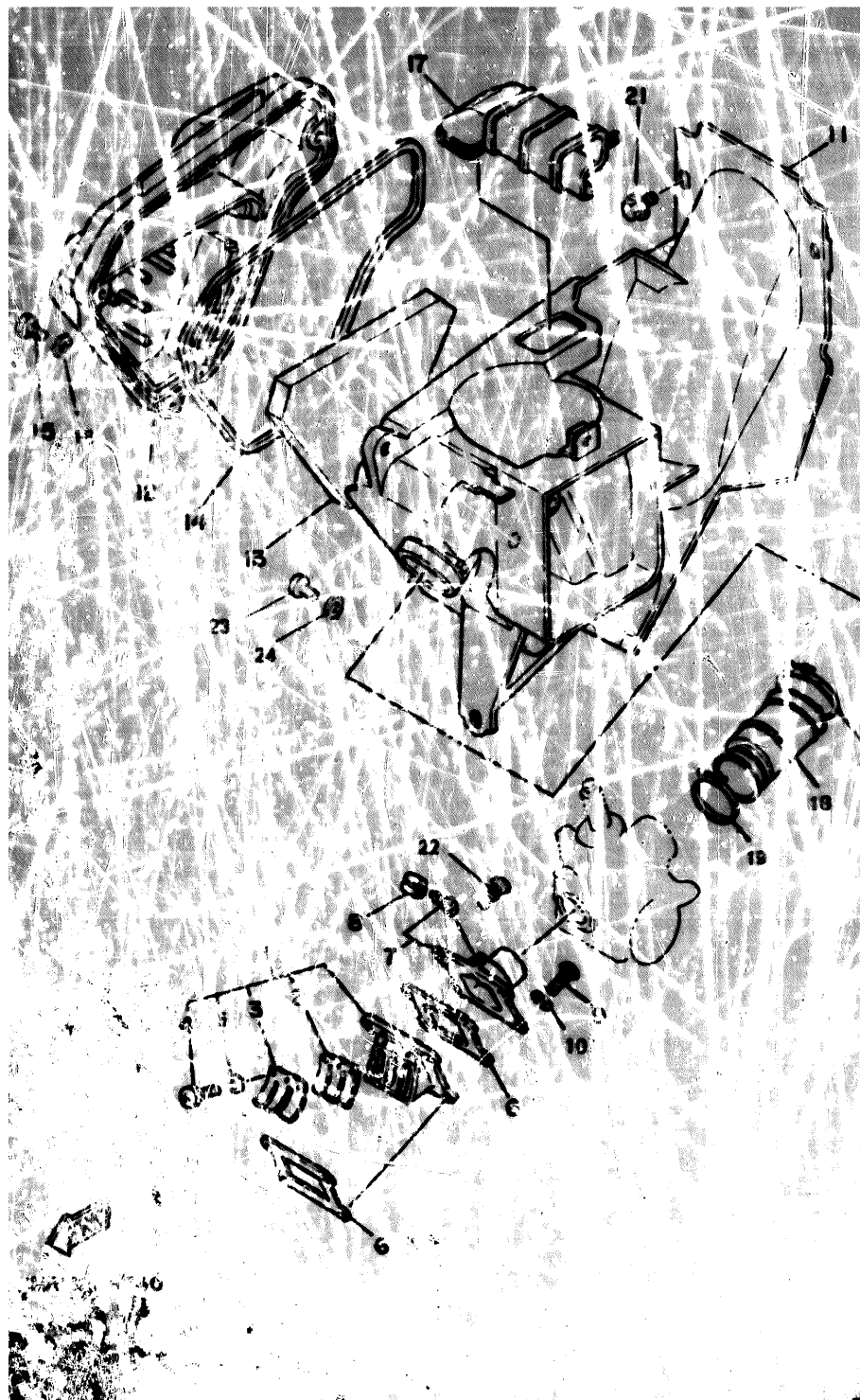


FIG. 1 INTAKE

REF	PART NO	DESCRIPTION	QTY	REMARKS
1	5G1-13610-00	REED VALVE ASSY	1	
2	2A3-11613-00	SPEED VALVE	1	
3	5G1-13016-00	STAMPED REED VALVE	1	
4	93580-0100	SCREW PAN HEAD	3	
5	92990-03100	WASHER SPRING	3	
6	3MT-13621-00	GASKET VALVE SEAT	2	
7	3MN-13565-00	JOINT CARBURATOR	1	
8	90468-0203	CLAMP	1	
9	98501-06025	SCREW PAN HEAD	2	
10	92990-06100	WASHER SPRING	2	
11	3HL-14420-00	AIR CLEANER ASSY 2	1	
12	3MP-14417-00	CAP CLEANER CASE 1	1	
13	3T2-1445-00	ELEMENT AIR CLEANER	1	
14	5T6-14457-00	SEAT	1	
15	98506-01016	SCREW PAN HEAD	3	
16	92996-03600	WASHER SPRING	3	
17	3MT-14437-00	DUET	1	
18	3MP-14453-00	JOINT AIR CLEANER 1	1	
19	90460-33087	CLAMP HOSE	1	
20	90460-51059	CLAMP HOSE	1	
21	90119-06014	BOLT WITH WASHER	4	
22	90109-06014	BOLT	2	
23	97313-05016	BOLT	1	
24	92301-06600	WASHER ELEMENT	1	

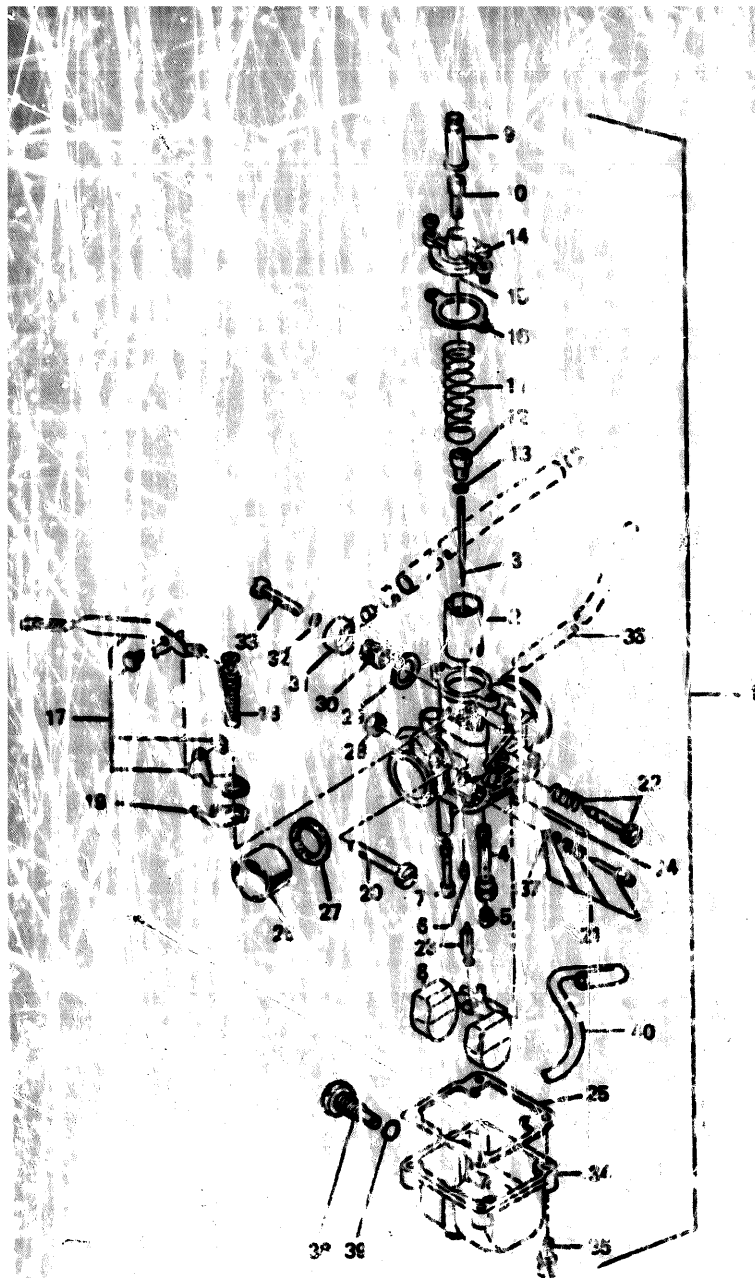


FIG. 5 CARBURETOR

REF	PART NO	DESCRIPTION	QTY	REMARKS
1	4AD-E4301-00	CARBURETOR ASSY 1	1	
2	3HL-E4112-00	VALVE THROTTLE	1	
3	3MR-E4116-00	NEEDLE	1	
4	4AL-E4341-00	NOZZLE MAIN	1	
5	3MS-E4347-00	JET (68)	1	
6	3MR-E4142-00	JET (35)	1	
7	3HL-E4312-00	JET (55)	1	
8	3HL-E4385-00	FLOAT	1	
9	3HL-E4169-00	CAP	1	
10	3HL-E4106-00	SCREW THROTTLE STOP	1	
11	3HL-E4331-00	SPRING	1	
12	3HL-E4136-00	NUT	1	
13	3HL-E4137-00	SEAT SPRING	1	
14	3HL-E4444-00	SCREW	2	
15	3HL-E4163-00	COVER	1	
16	3HL-E4125-00	GASKET	1	IN GASKET SET
17	3HL-E4375-00	STARTER SET	1	
18	3HL-E4371-00	STARTER	1	
19	3HL-E4377-00	SPRING	1	
20	3HL-E4115-00	SCREW	1	
21	3MP-E4104-00	AIR SCREW SET	1	
22	3HL-E4113-00	VALVE SCREW SET	1	
23	3HL-E4392-00	JET PILOT	1	
24	3HL-E4395-00	AXLE FLOAT	1	
25	3HL-E4394-00	GASKET	1	IN GASKET SET
26	3HL-E4157-00	REDUCTOR PLASTIC JOINT	1	
27	3HL-E4126-00	GASKET	1	IN GASKET SET
28	65701-05500	NUT	1	

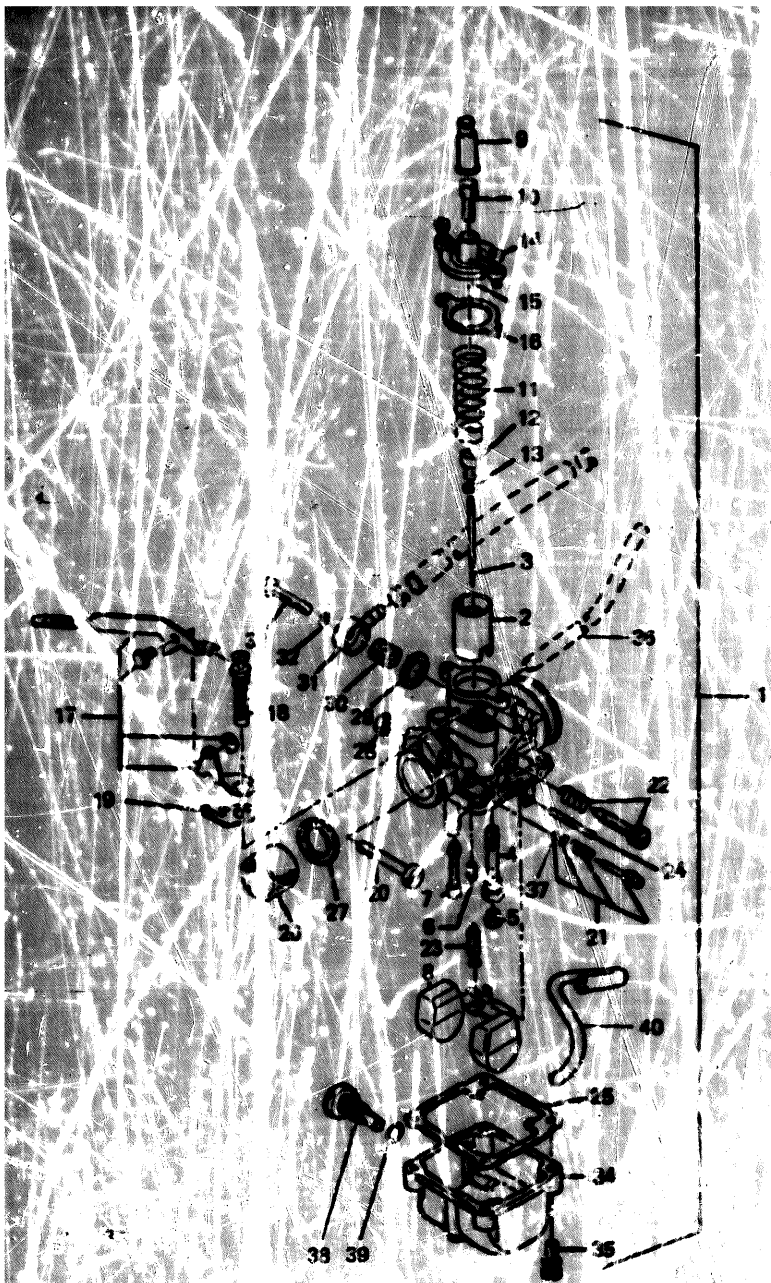


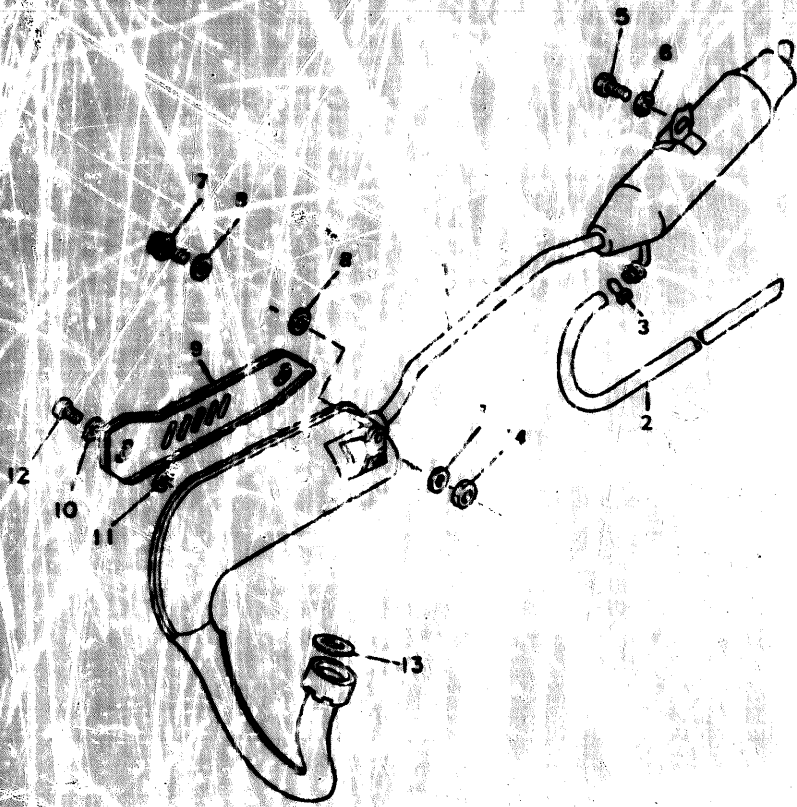
FIG. 5 CARBUJET 2

REF	PART NO	DESCRIPTION	QTY	REMARKS
29	3HL-F4348-0	GASKET	1	IN GASKET SET
30	3HL-F4501-00	FILTER	1	
31	3HL-F4341-0	UNION	1	
32	3HL-F4345-00	O.RING	1	IN GASKET SET
33	3HL-F4140-00	SCREW	1	
34	3MR-E4181-00	CARBURETOR BOWL	1	
35	98580-04016	SCREW	4	
36	3HL-E4349-00	HOSE	1	
37	3HL-F4345-00	O.RING	1	IN GASKET SET
38	3MN-E4333-00	SCREW	1	
39	3MN-L4198-00	O.RING	1	
40	3MN-E443E-00	HOSE	1	
	3HL-W0005-00	GASKET SET	1	

(RE. :16/25/27/29/32/37)



FIG. 6 EXHAUST

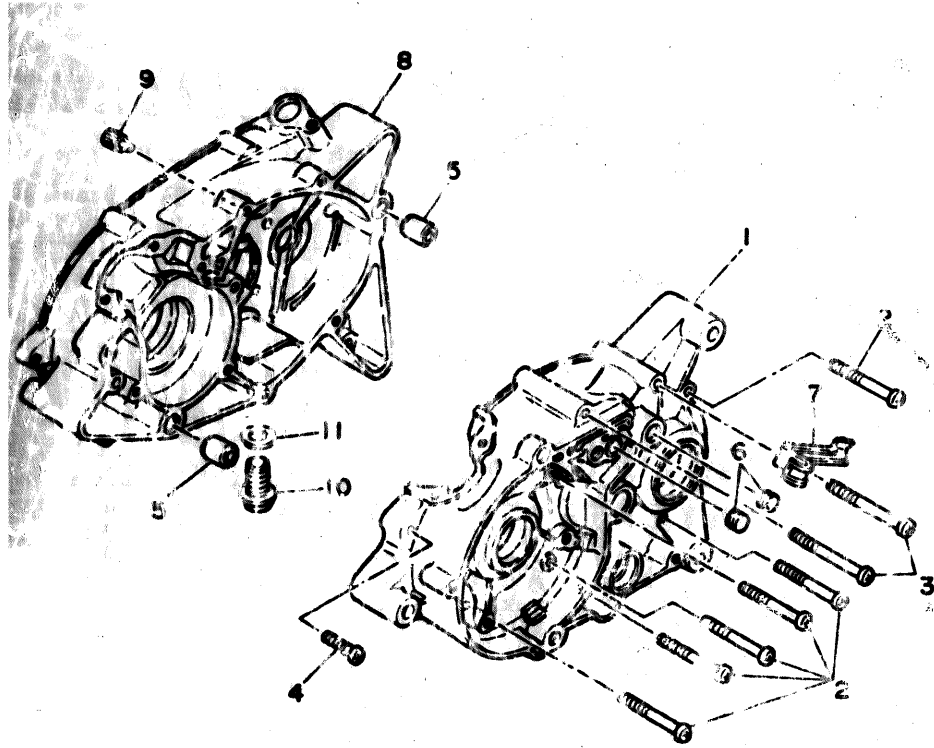


REF	PART NO	DESCRIPTION	QTY	REMARKS
1	4LD-E4703-00-11	EXHAUST PIPE ASSY	1	
2	90445-11780	HOSE	1	
3	00467-10008	CLIP	1	
5	97313-00016	BOLT	1	
6	92990-00100	WASHER	1	
7	97026-06030	BOLT	1	
8	90202-05180	WASHER PLAIN	3	
9	3HL-E5718-00-11	PROTECTOR MUFFLER	1	
10	90202-05180	WASHER PLAIN	2	
11	90202-05180	WASHER PLAIN	2	
12	9E906-06010	CLAMP	2	
13	3MT-14613-00	GASKET EXHAUST	1	
14	95706-06500	NUT	1	



FIG. 7 CRANKCASE

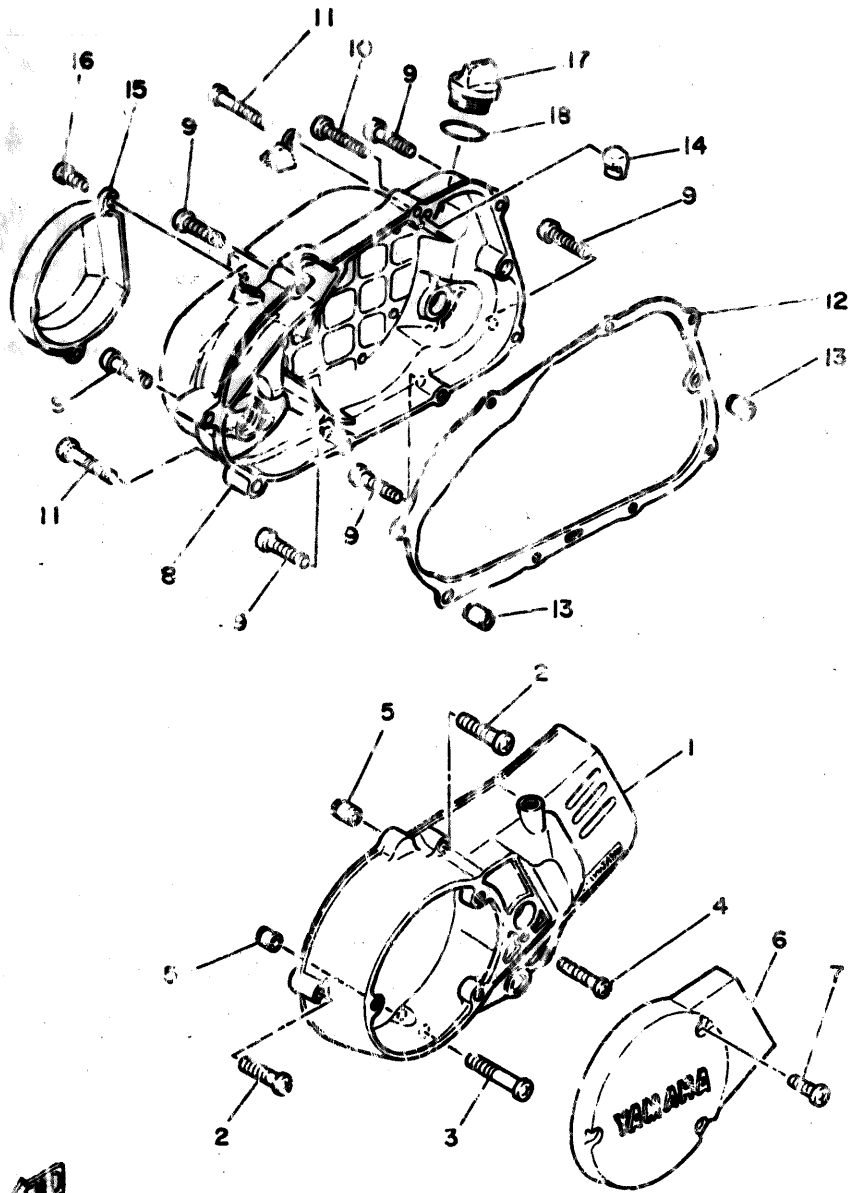
REF	PART NO	DESCRIPTION	QTY	REMARKS
1	353-15111-01	CRANKCASE 1	1	
2	98501-06050	SCREW, PAN HEAD	6	
3	98501-06055	SCREW, PAN HEAD	2	
4	98701-06025	SCREW, PAN HEAD	1	
5	98810-12015	PIN, DOWEL	2	
6	90334-12009	PLUG, STRAIGHT	2	
7	3T2-15484-01	CLAMP 2	1	
8	4AD-15121-00	CRANKCASE 2	1	
9	492-15387-00	STOPPER	1	
10	90340-12005	PLUG, STRAIGHT SCREW	1	
11	90410-12207	GASKET	1	



3M5311-3030

FIG. 8 CRANKCASE COVER 1

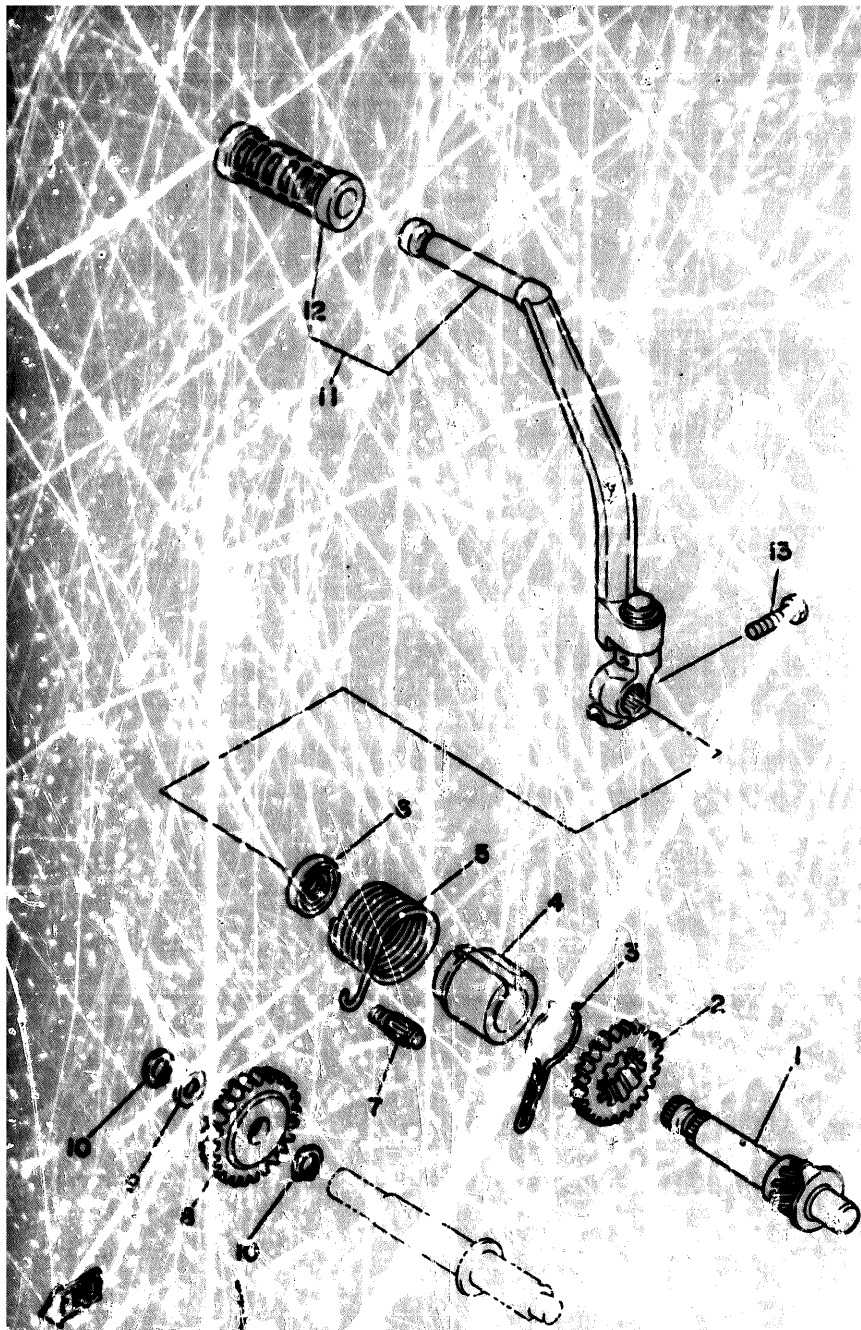
REF	PART NO.	DESCRIPTION	QTY	REMARKS
1	5G1-15411-00	COVER, CRANKCASE 1	1	
2	98516-06030	SCREW, PAN HEAD	2	
3	98506-06040	SCREW, PAN HEAD	1	
4	98506-06045	SCREW, PAN HEAD	1	
5	99530-10014	PIN, DOWEL	2	
6	518-B5415-00	COVER, GENERATOR	1	
7	98516-06020	SCREW, PAN HEAD	3	
8	4U7-15421-00	COVER, CRANKCASE 2	1	
9	98516-06030	SCREW, PAN HEAD	6	
10	98506-06035	SCREW, PAN HEAD	1	
11	98506-06040	SCREW, PAN HEAD	2	
12	3MT-15451-00	GASKET, CRANKCASE COVER	1	
13	99530-10014	PIN, DOWEL	2	
14	353-15437-02	SCRAPER, OIL	1	
15	4U7-15415-00	COVER, OIL PUMP	1	
16	98506-06016	SCREW, PAN HEAD	2	
17	353-15362-00	PLUG, OIL LEVEL	1	
18	93210-21190	O-RING	1	



5J1332-2090

FIG. 9 STARTER

REF	PART NO	DESCRIPTION	QTY	REMARKS
1	2A1-15660-00	KICK AXLE ASSY	1	
2	53-15641-00	GEAR, KICK (24T)	1	
3	90468-26033	CLIP	1	
4	4U1-15664-00	GUIDE, SPRING	1	
5	90508-21136	SPRING, TORSION	1	
6	93109-75001	OIL SEAL	1	
7	248-15668-00	STOPPER	1	
8	353-15651-00	GEAR, KICK IDLE (25T)	1	
9	90211-12166	WASHER, PLATE	1	
10	99009-12400	CIRCLIP	2	
11	2UM-E5620-00	KICK CRANK ASSY	1	
12	5TB-E5618-00	COVER, KICK LEVER	1	
13	97016-06025	SCREW	1	



3100

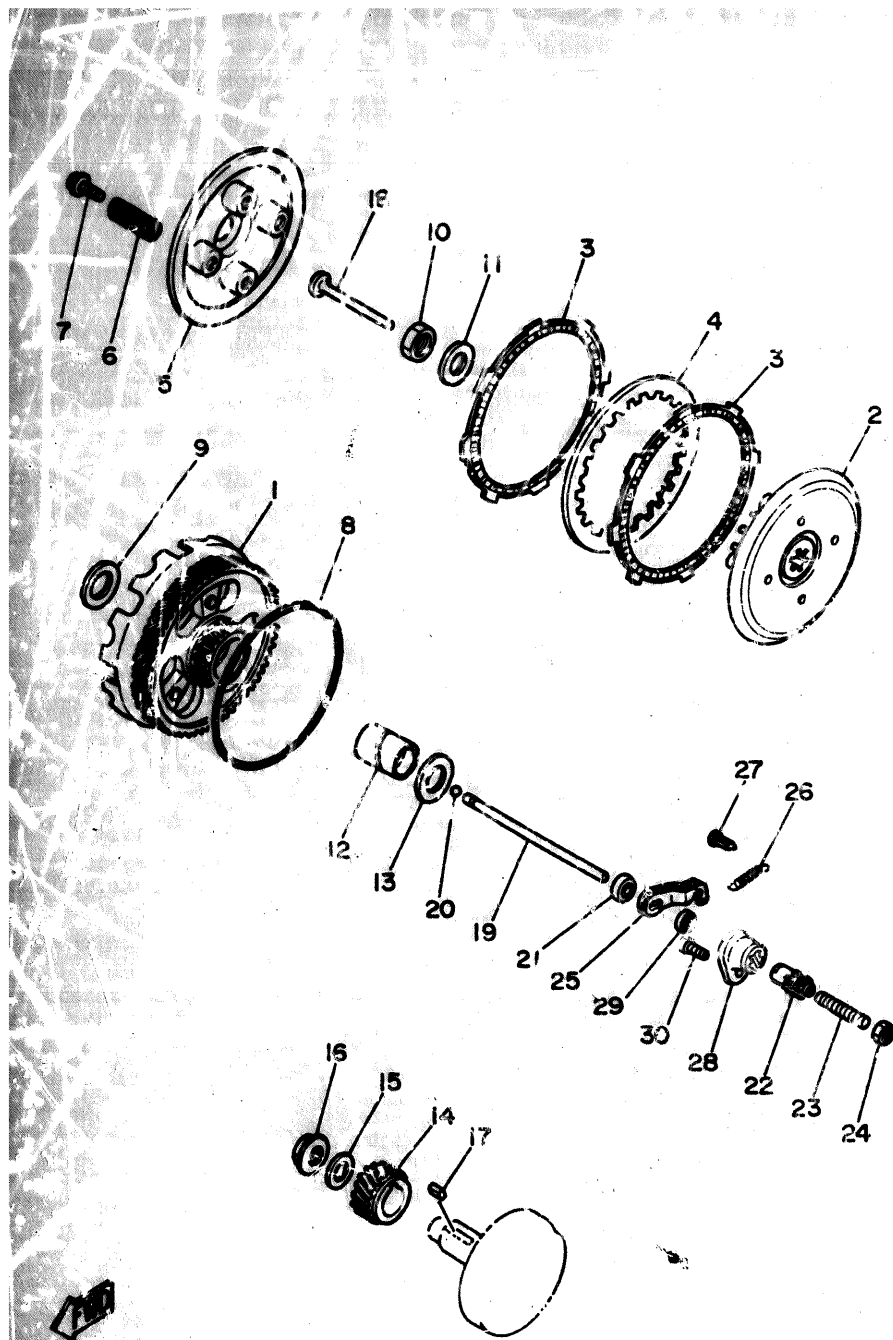


FIG. 10 CLUTCH

REF	PART NO	DESCRIPTION	QTY	REMARKS
1	5L3-16150-00	PRIMARY DRIVEN GEAR CPT	1	
2	251-16371-01	BOSS, CLUTCH	1	
3	598-16321-01	PLATE, FRICTION	2	
4	131-16326-00	PLATE, CLUTCH 1	1	
5	251-16351-00	PLATE, PRESSURE 1	1	
6	90501-20122	SPRING, COMPRESSION	4	
7	90119-05001	BOLT, WITH WASHER	4	
8	93210-99103	O-RING	1	
9	132-16164-00	PLATE, THRUST 2	1	
10	90179-12050	NUT	1	
11	90205-12015	WASHER, CONICAL SPRING	1	
12	90560-17123	SPACER	1	
13	121-16164-00	PLATE, THRUST 2	1	
14	353-16111-01	GEAR, PRIMARY DRIVE 19T	1	
15	90208-12015	WASHER, CONICAL SPRING	1	
16	90179-12244	NUT	1	
17	90282-05005	KEY, STRAIGHT	1	
18	137-16356-00	ROD, PUSH 1	1	
19	353-16357-00	ROD, PUSH 2	1	
20	93503-16010	BALL	1	
21	93102-04332	OIL SEAL	1	
22	241-16341-01	SCREW, PUSH	1	
23	90113-06013	BOLT, SET	1	
24	95303-05700	NUT	1	
25	451-16342-00	LEVER, PUSH	1	
26	90505-07066	SPRING, TENSION	1	
27	132-16346-00	HOOK, SPRING	1	
28	353-16395-00	HOUSING, PUSH SCREW	1	

SM6310-2110

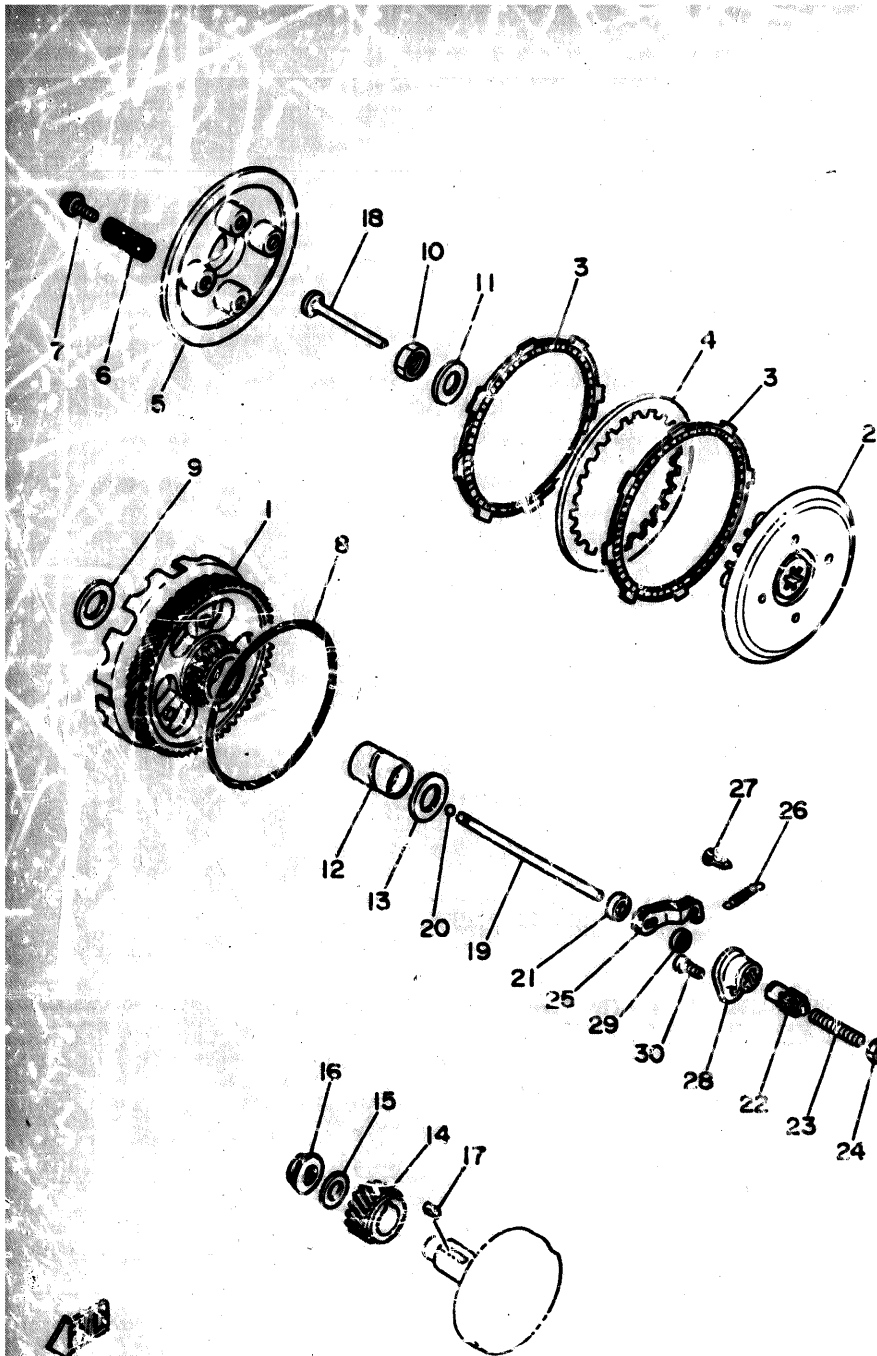


FIG. 10 CLUTCH

REF	PART NO	DESCRIPTION	QTY	REMARKS
29	93104-10085	OIL SEAL	1	
30	98502-06016	SCREW, PAN HEAD	1	

510-2110

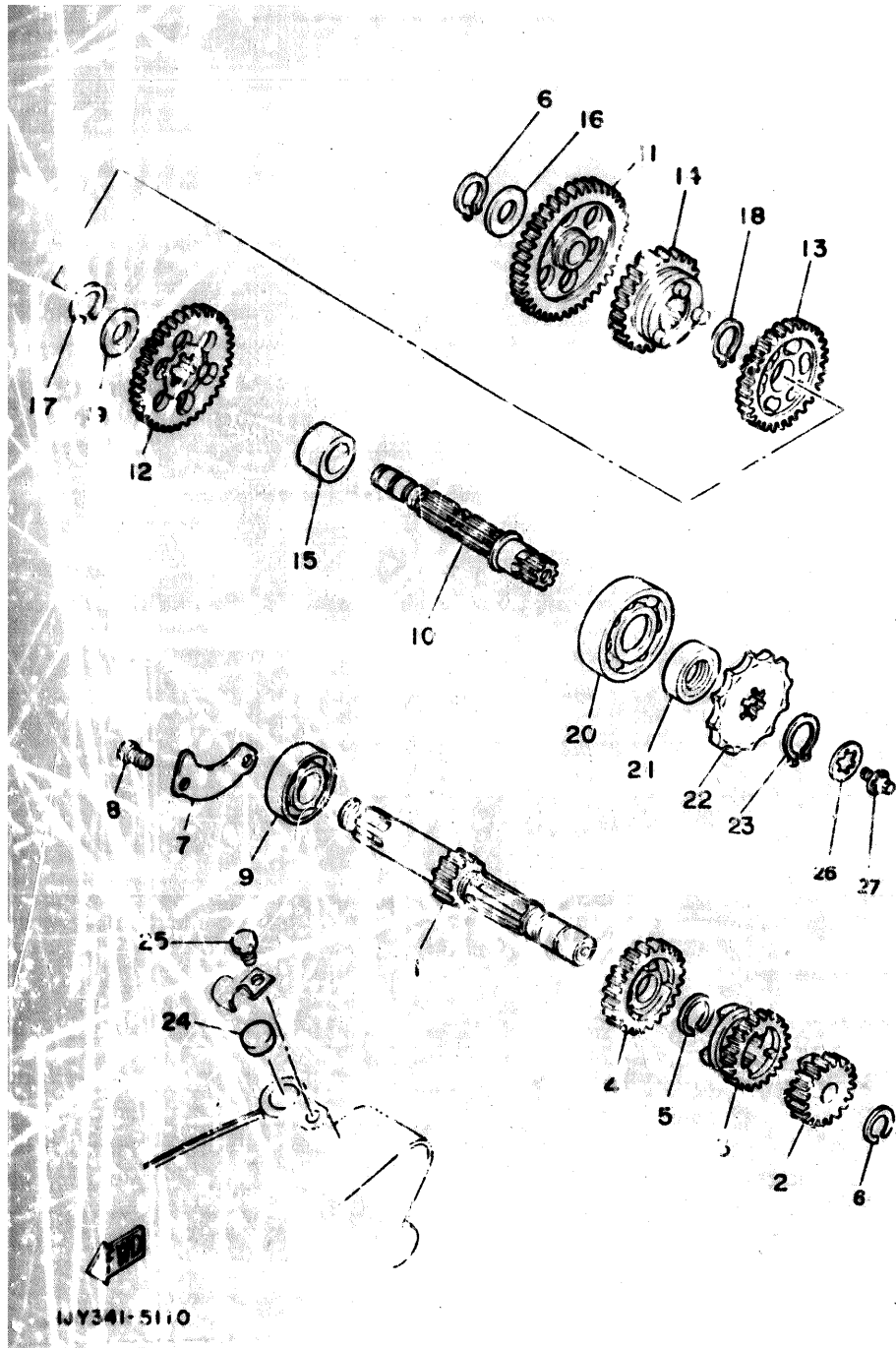
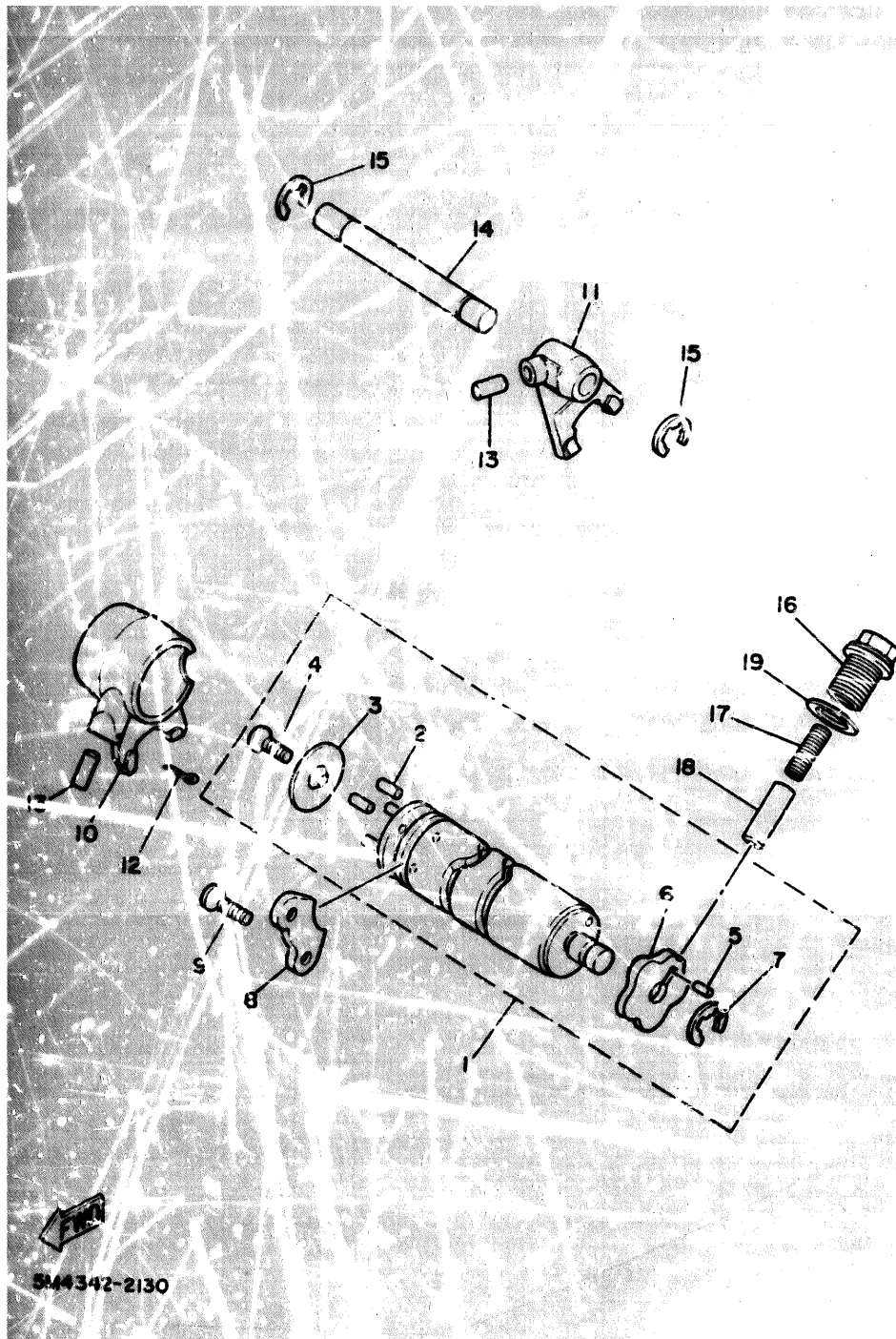


FIG. 11 TRANSMISSION

REF	PART NO	DESCRIPTION	QTY	REMARKS
1	353-17411-10	AXLE, MAIN (12T)	1	
2	353-17121-11	GEAR, 2ND PINION (17T)	1	
3	353-17131-10	GEAR, 3RD PINION (21T)	1	
4	353-17141-12	GEAR, 4TH PINION (24T)	1	
5	93440-16089	CIRCLIP	1	
6	99009-13400	CIRCLIP	2	
7	353-17471-00	PLATE, COVER	1	
8	90209-06012	SCREW, PIN HEAD	2	
9	93306-20333	BEARING	1	
10	20M-17421-00	AXLE, DRIVE	1	
11	353-17211-01	GEAR, 1ST WHEEL (39T)	1	
12	367-17221-00	GEAR, 2ND WHEEL (34T)	1	
13	353-17231-00	GEAR, 3RD WHEEL (30T)	1	
14	353-17241-00	GEAR, 4TH WHEEL (27T)	1	
15	90387-16126	COLLAR	1	
16	257-17219-00	SHIM (0,61)	1	
17	93440-16030	CIRCLIP	2	
18	99009-13400	CIRCLIP	1	
19	214-17468-00-09	SHIM (0,9T)	1	
20	93306-30301	BEARING (B6303)	1	
21	93102-17187	OIL SEAL	1	
22	93811-10001	SPROCKET DRIVE 11T	1	
23	99009-16400	CIRCLIP	1	
24	90358-16029	PLUG	1	
25	97011-06010	BOLT	1	
26	90209-13185	WASHER	1	
27	90109-06685	BOLT	1	

NJY341-5110

FIG. 12 SHIFT CAM.FORK



REF	PART NC	DESCRIPTION	QTY	REMARKS
1	4U1-18540-00	SHIFT CAM ASSY	1	
2	93604-10011	.PIN,DOWEL	4	
3	214-18561-00	.PLATE,SIDE 1	1	
4	98701-05012	.SCREW,FLAT HEAD	1	
5	93604-08071	.PIN,DOWEL	1	
6	374-18141-00	.PLATE,STOPPER	1	
7	93440-12026	.CIRCLIP	1	
8	353-18562-00	PLATE,STOPPER 2	1	
9	98701-06012	SCREW,FLAT HEAD	2	
10	353-18511-01	FORK,SHIFT 1	1	
11	353-18512-01	FORK,SHIFT 2	1	
12	91401-25020	PIN,COTTER	1	
13	93606-14081	PIN,DOWEL	2	
14	214-18531-00	BAR,SHIFT FORK GUIDE 1	1	
15	99006-10600	CIRCLIP	2	
16	90109-14485	BOLT	1	
17	90501-09292	SPRING,COMPRESSION	1	
18	353-18547-00	STOPPER,CAM	1	
19	90430-14208	GASKET,DRAIN	1	

544342-2130

# CONTENTS

## ENGINE

CYLINDER .....	B2
CRANKSHAFT. PISTON .....	B3
OIL PUMP .....	B4
INTAKE .....	B5
CARBURETOR .....	B6 - B7
EXHAUST .....	B8
CRANKCASE .....	B9
CRANKCASE COVER 1 .....	B10
STARTER .....	B11
CLUTCH .....	B12 - B13
TRANSMISSION .....	B14
SHIFT CAM. FORK .....	B15
SHIFT SHAFT .....	C2

## CHASSIS

FRAME .....	C3
FENDER .....	C4
SIDE COVER .....	C5
OIL TANK .....	C6
REAR ARM .....	C7

REAR SUSPENSION .....	C8
STEERING .....	C9-C10
FRONT FORK .....	C11
FUEL TANK .....	C12-C13
SEAT .....	C14
FRONT WHEEL .....	C15
FRONT BRAKE CALIPER .....	D2
REAR. WHEEL .....	D3-D4
STEERING HANDLE. CABLE .....	D5
FRONT MASTER CYLINDER .....	D6
STAND. FOOTREST .....	D7
COWLING 1 .....	D8
GENERATOR .....	D9
FLASHER LIGHT .....	D10
METER .....	D11
HEADLIGHT .....	D12
TAILLIGHT .....	D13
HANDLE SWITCH. LEVER .....	D14
ELECTRICAL 1 .....	D15-E2

## INDEX

NUMERICAL INDEX .....	M1 -M2
-----------------------	--------



# CONTENTS

## ENGINE

CYLINDER .....	B2
CRANKSHAFT. PISTON .....	B3
OIL PUMP .....	B4
INTAKE .....	B5
CARBURETOR .....	B6 - B7
EXHAUST .....	B8
CRANKCASE .....	B9
CRANKCASE COVER 1 .....	B10
STARTER .....	B11
CLUTCH .....	B12 - B13
TRANSMISSION .....	B14
SHIFT CAM. FORK .....	B15
SHIFT SHAFT .....	C2

## CHASSIS

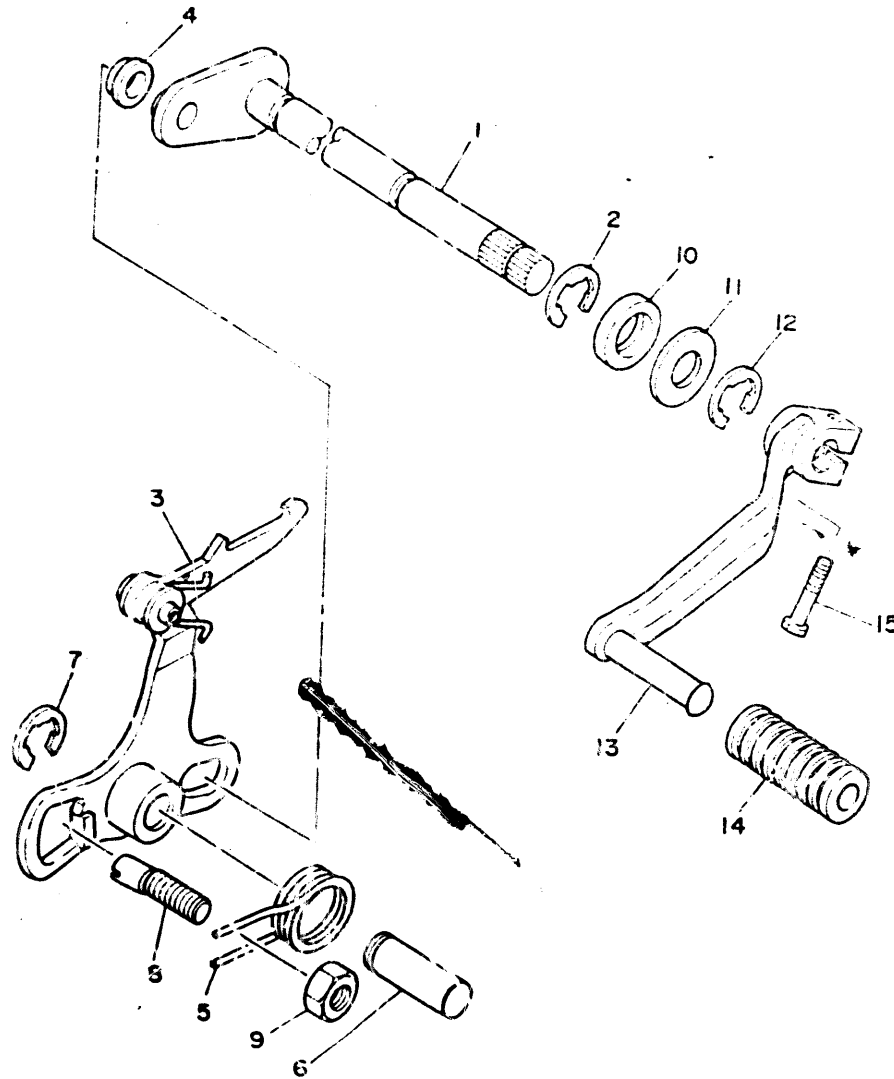
FRAME .....	C3
FENDER .....	C4
SIDE COVER .....	C5
OIL TANK .....	C6
REAR ARM .....	C7

REAR SUSPENSION .....	C8
STEERING .....	C9-C10
FRONT FORK .....	C11
FUEL TANK .....	C12-C13
SEAT .....	C14
FRONT WHEEL .....	C15
FRONT BRAKE CALIPER .....	D2
REAR. WHEEL .....	D3-D4
STEERING HANDLE. CABLE .....	D5
FRONT MASTER CYLINDER .....	D6
STAND. FOOTREST .....	D7
COWLING 1 .....	D8
GENERATOR .....	D9
FLASHER LIGHT .....	D10
METER .....	D11
HEADLIGHT .....	D12
TAILLIGHT .....	D13
HANDLE SWITCH. LEVER .....	D14
ELECTRICAL 1 .....	D15-E2

## INDEX

NUMERICAL INDEX .....	M1 -M2
-----------------------	--------

FIG.13 SHIFT SHAFT



REF	PART NO	DESCRIPTION	QTY
1	2AL-18101-01	SHIFT SHAFT ASSY	1
2	99006-10600	CIRCLIP	1
3	253-18120-00	SHIFT LEVER BODY	1
4	214-18198-00	ROLLER, SHIFT LEVER	1
5	90508-32054	SPRING, TORSION	1
6	367-18197-00	SHAFT	1
7	99006-10600	CIRCLIP	1
8	90149-08094	SCREW	1
9	95303-08600	NUT	1
10	93102-12106	OIL SEAL (SD 12-20-5 HS)	1
11	90201-12575	WASHER, PLATE	1
12	99006-10600	CIRCLIP	1
13	5T8-E8111-00	PEDAL, SHIFT	1
14	5T8-E8113-00	COVER, SHIFT PEDAL	1
15	97016-06020	BOLT	1

  
45R511-4130

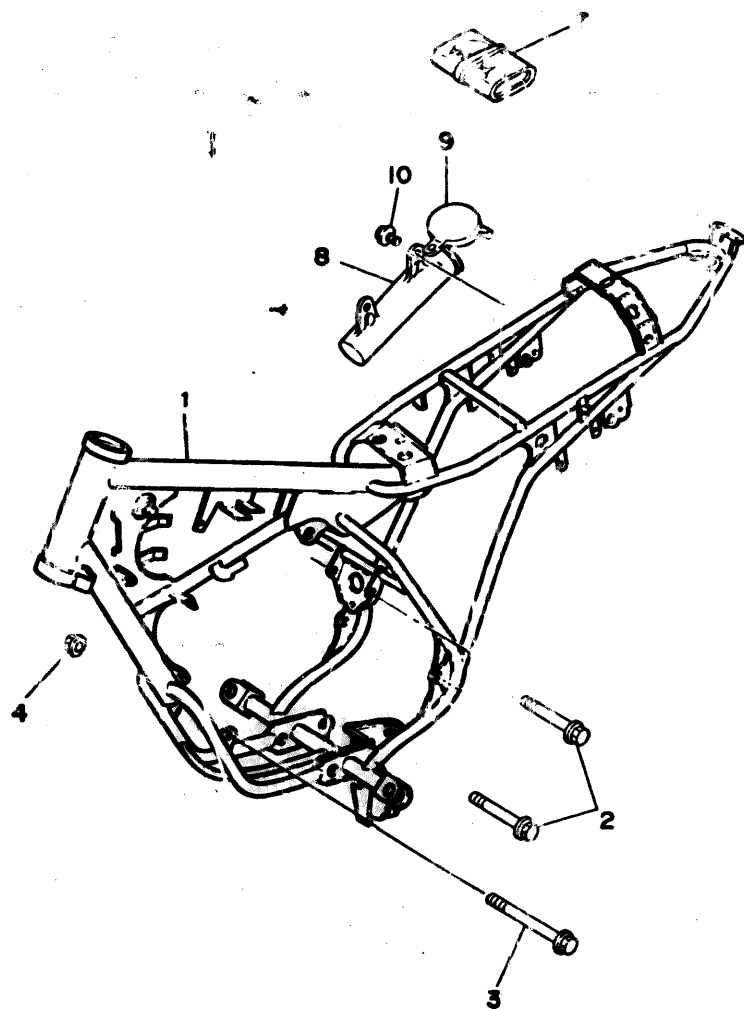
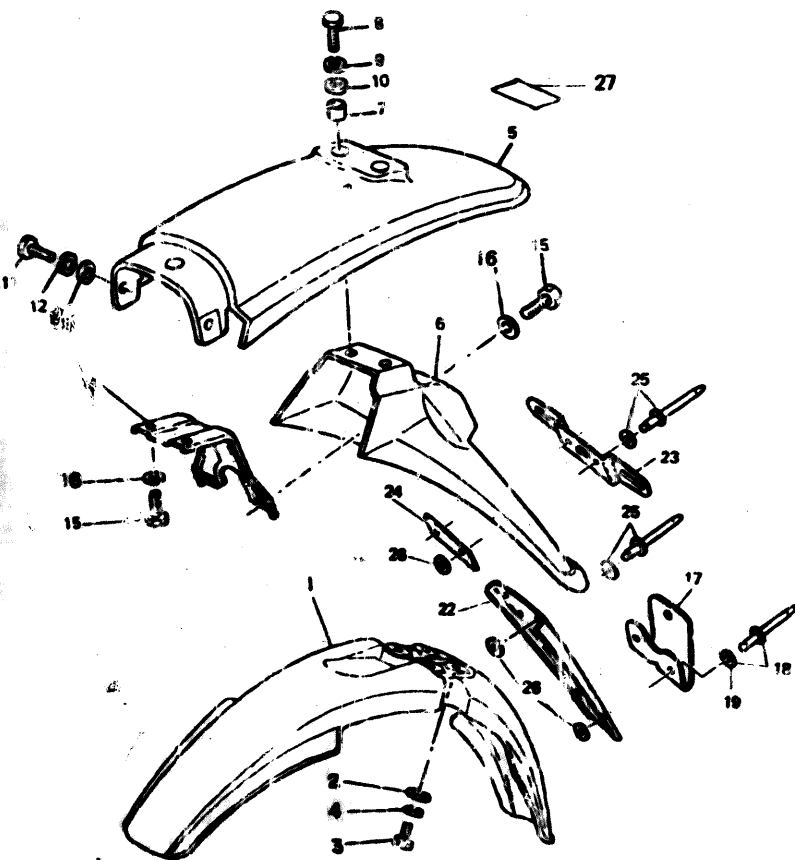


FIG. 14 FRAME

REF	PART NO	DESCRIPTION	QTY	REMARKS
1	3MR-F1110-0013	FRAME COMP. PARAWAY BLUE	1	UP VANARA BLACK
	3MR-F1110-0014	FRAME COMP. VIOLET	1	UP DEEP VIOLET
	3MR-F1110-0015	FRAME COMP. PURPLISH W.	1	UP PURPLISH W.
2	95811-08090	BOLT, FLANGE	2	
3	95811-08120	BOLT, FLANGE	1	
4	95701-08500	NUT, FLANGE	2	
7	54Y-F8100-00	TOOL KIT	1	
8	17W-28173-00	EX, TOOL	1	
9	17W-28185-00	LID	1	
10	90119-06056	BOLT, WITH WASHER	2	

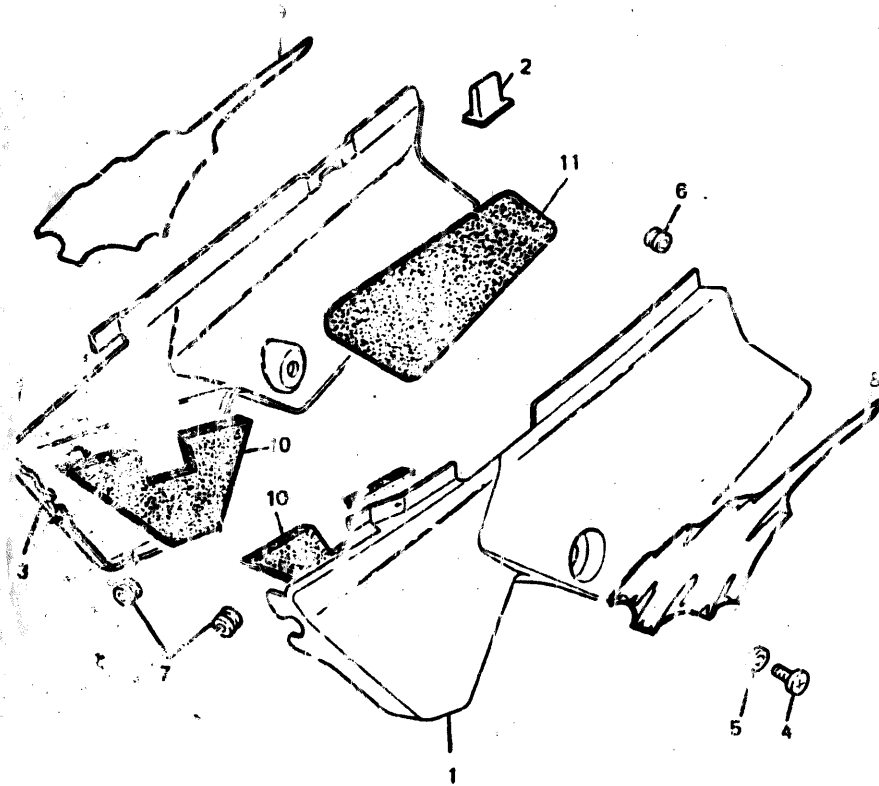
  
3MR1321-9140

FIG. 15 FENDER



REF	PART NO	DESCRIPTION	QTY	REMARKS
1	518-F1511-50	FENDER, FRONT WHITE	1	UR PURPLISH WHITE
	518-F1511-50	FENDER, FRONT BLACK	1	UR YAMAHA BLACK
	518-F1511-70	FENDER, FRONT VIOLET	1	UR DEEP VIOLET
2	90201-06067	WASHER, PLATE	4	
3	97011-06020	BOLT	4	
4	92900-06100	WASHER SPRING	4	
5	3HL-F1611-40	FENDER, REAR WHITE	1	UR PURPLISH WHITE
	3HL-F1611-10	FENDER, REAR BLACK	1	UR YAMAHA BLACK
	3HL-F1611-50	FENDER, REAR VIOLET	1	UR DEEP VIOLET
6	3MR-F1621-00	FLAP	1	
7	90387-064T3	COLLAR	2	
8	97026-06014	BOLT	3	
9	92905-06100	WASHER SPRING	3	
10	92906-06600	WASHER, PLATE	3	
11	92506-06014	SCREW, PAN HEAD	2	
12	92906-06100	WASHER, SPRING	2	
13	92906-06600	WASHER, PLATE	2	
14	3HL-F1623-00-11	PLATE, FLAP FITTING 1	1	UR YAMAHA BLACK
15	97003-06012	BOLT	2	
16	92990-06100	WASHER SPRING	2	
17	33G-R5132-01	BRACKET, REFLECTOR 1	1	
18	90267-40076	RIVET, BLIND	2	
19	90201-047A2	WASHER, PLATE	4	
22	3MR-21521-00	FLAP, REAR FENDER	1	
23	3MR-F1685-00-11	BRACKET, LICENSE	1	UR YAMAHA BLACK
24	3MR-F1624-00-11	PLATE, FLAP FITTING 2	1	UR YAMAHA BLACK
25	90257-48014	RIVET, BLIND	6	
26	90201-04325	WASHER, PLATE	10	
27	3NC-F8391-00	EMBLEM	1	
	3NC-F8391-10	EMBLEM	1	
	3NC-F8391-20	EMBLEM	1	

FIG 16 SIDE COVER



REF	PART NO	DESCRIPTION	QTY	REMARKS
1	3HL-F1711-50	COVER, SIDE 1 WHITE	1	UR PURPLISH WHITE
	3HL-F1711-10-12	COVER, SIDE 1 BLACK	1	UR YAMAHA BLACK
	3HL-F1711-20-12	COVER, SIDE 1 VIOLET	1	UR DEEP VIOLET
2	40F-21703-00	GROMMET	1	
3	3HL-F1721-50	COVER, SIDE 2 WHITE	1	UR PURPLISH WHITE
	3HL-F1721-10-12	COVER, SIDE 2 BLACK	1	UR YAMAHA BLACK
	3HL-F1721-20	COVER, SIDE 2 VIOLET	1	UR DEEP VIOLET
4	90143-06223	SCREW	2	
5	90201-06218	WASHER PLATE	2	
6	90480-01401	GROMMET	1	
7	90480-12325	GROMMET	2	
8	3HL-F179J-00	GRAPHIC SET 1	1	UR FOR PURPLISH WHITE
	3HL-F179J-10	GRAPHIC SET 1	1	UR FOR YAMAHA BLACK
	3HL-F179J-20	GRAPHIC SET 1	1	UR FOR DEEP VIOLET
9	3HL-F179K-00	GRAPHIC SET 2	3	UR FOR PURPLISH WHITE
	3HL-F179K-10	GRAPHIC SET 2	1	UR FOR YAMAHA BLACK
	3HL-F179K-20	GRAPHIC SET 2	1	UR FOR DEEP VIOLET
10	3HL-F1778-00	DAMPER, LOCATING 1	2	
11	3HL-F174T-00	INSULATOR, SIDE COVER 2	1	

MR1321-0150

C5

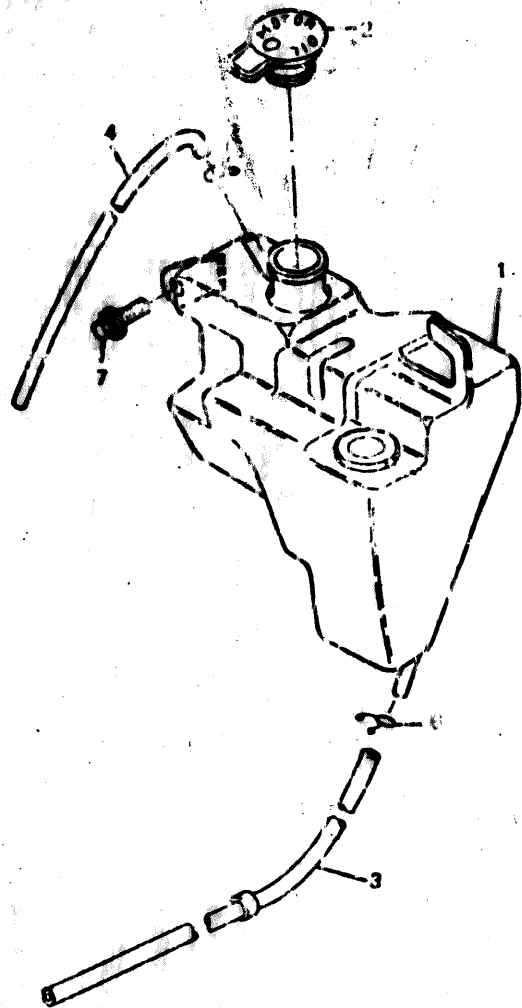


FIG. 17 OIL TANK

REF	PART NO	DESCRIPTION	QTY	REMARKS
1	3AL-F1751-00	TANK, OIL	1	
2	5T6-F1771-00	BODY, CAP	1	
3	90445-09353	HOSE	1	
4	5T8-F1745-01	PIPE, OIL TANK BREATHER	1	
5	90467-08003	CLIP	1	
6	90467-08003	CLIP	1	
7	90119-06013	BOLT, WITH WASHER	1	

3AL-F1751-01 50

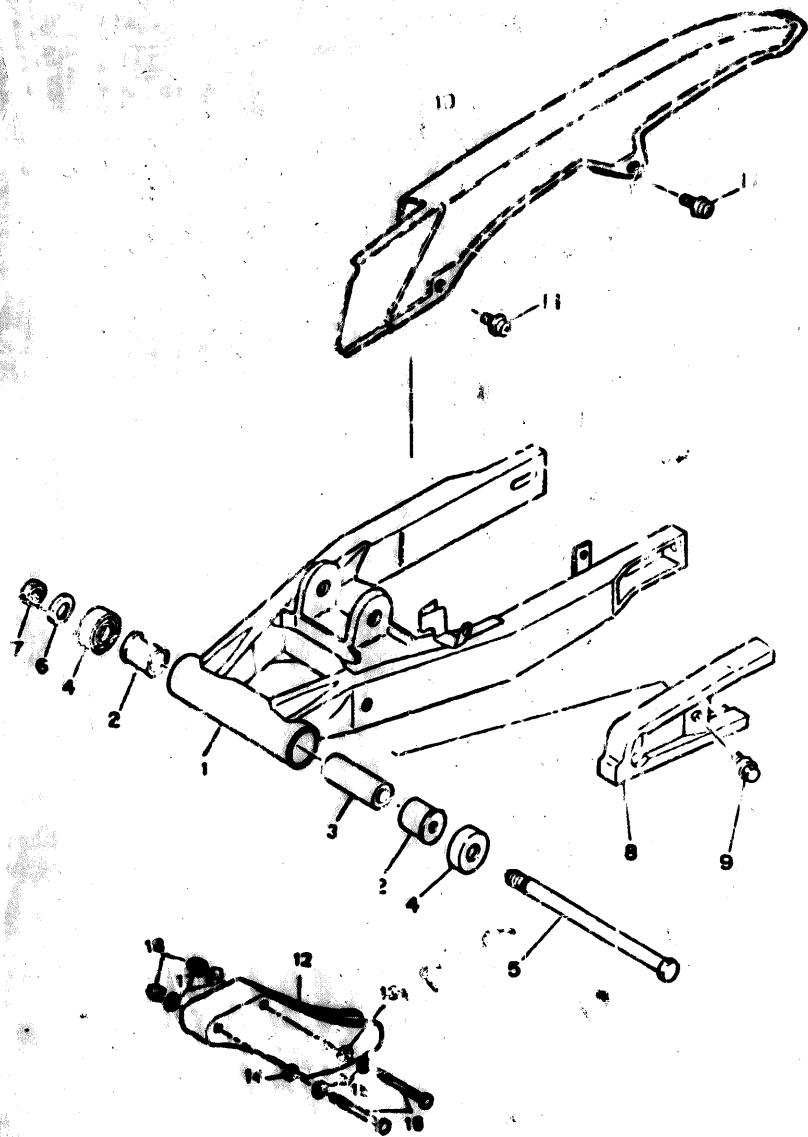


FIG. 1 REAR ARM

REF	PART NO	DESCRIPTION	QTY	REMARKS
1	3MP-F2110-01-11	REAR ARM .ORION SILVER	1	
2	90386-18099	BUSH	1	
3	3HL-F2126-00	COLLAR, DISTANCE	1	
4	401-22128-01	SEAL, GUARD	1	
5	5T8-F2141-00	SHAFT, PI/OT	1	
6	92990-10600	WASHER, PLATE	1	
7	98601-10100	NUT, U	1	
8	34X-22151-01	SEAL, GUARD	1	
9	90159-06059	SCREW, WITH WASHER	1	
10	3MP-F2311-00	CASE, CHAIN	1	
11	90159-06058	SCREW, WITH WASHER	2	
12	3HL-F2153-10	CHAIN GUID	1	
13	3HL-F2243-00	WASHER PLANE	1	
14	3HL-F2246-00	COLLAR	1	
15	3HL-F2245-00	WASHER PLANE	2	
16	3HL-F2241-00	SCREW	2	
17	3HL-F2245-00	WASHER PLANE	2	
18	3HL-F2251-00	NUT	2	

FIG. 1  
B-491321-018

C7

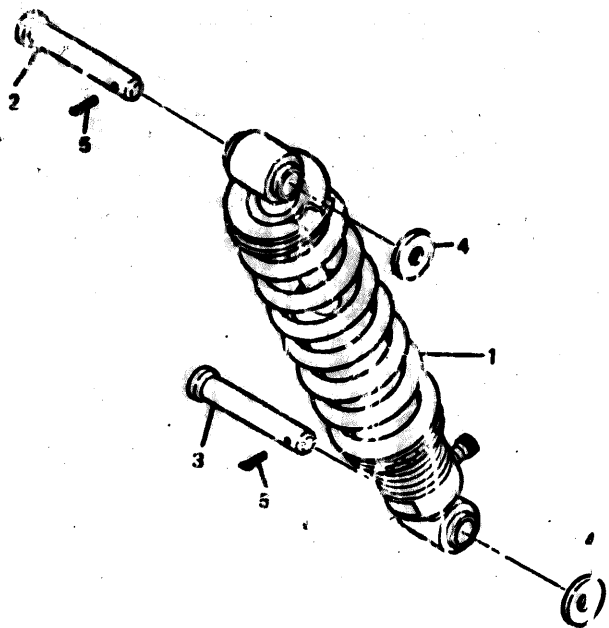


FIG. 19 REAR SUSPENSION

REF	PART NO	DESCRIPTION	QTY	REMARKS
1	3HL-F22 0-00	SPOCK ABSORBER ASSY	1	UR BLACK
2	90240-10072	PIN, CLEVIS	1	
3	90240-10069	PIN, CLEVIS	1	
4	92990-10600	WASHER, P. STE	2	
5	91401-25020	PIN, CENTER	2	

PHILIP - 8170



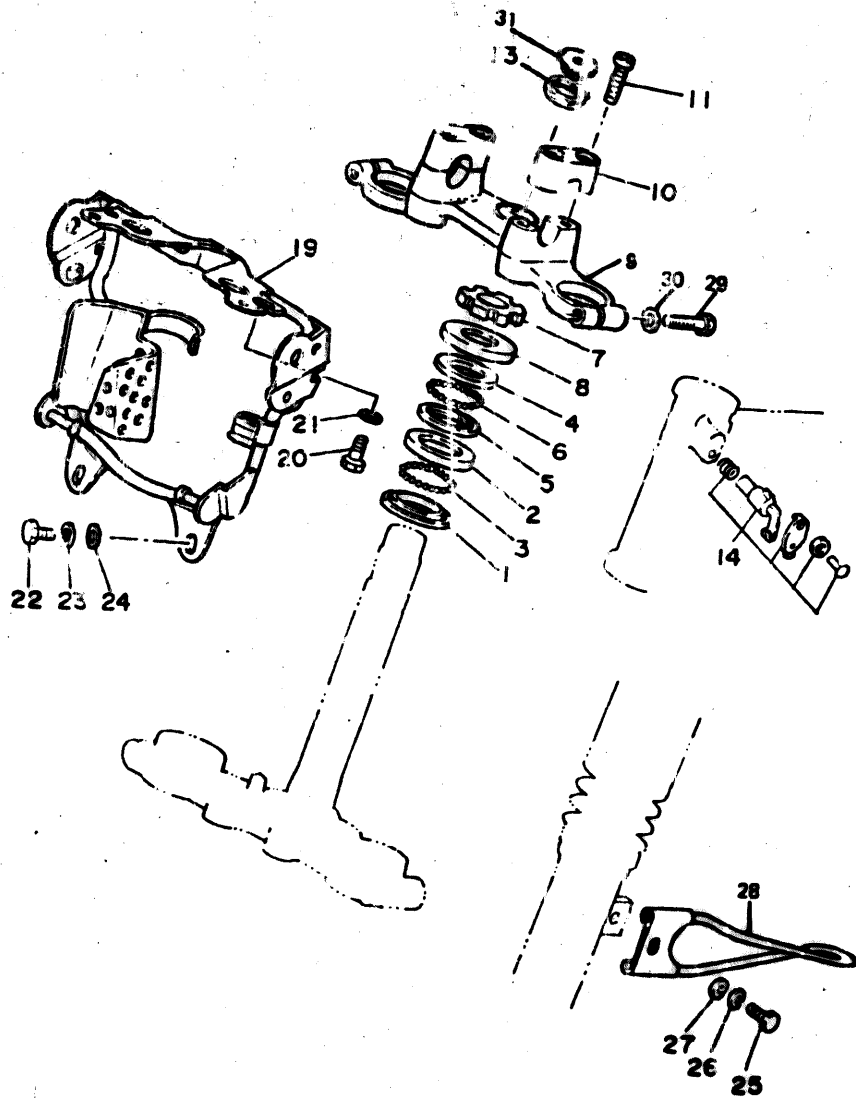
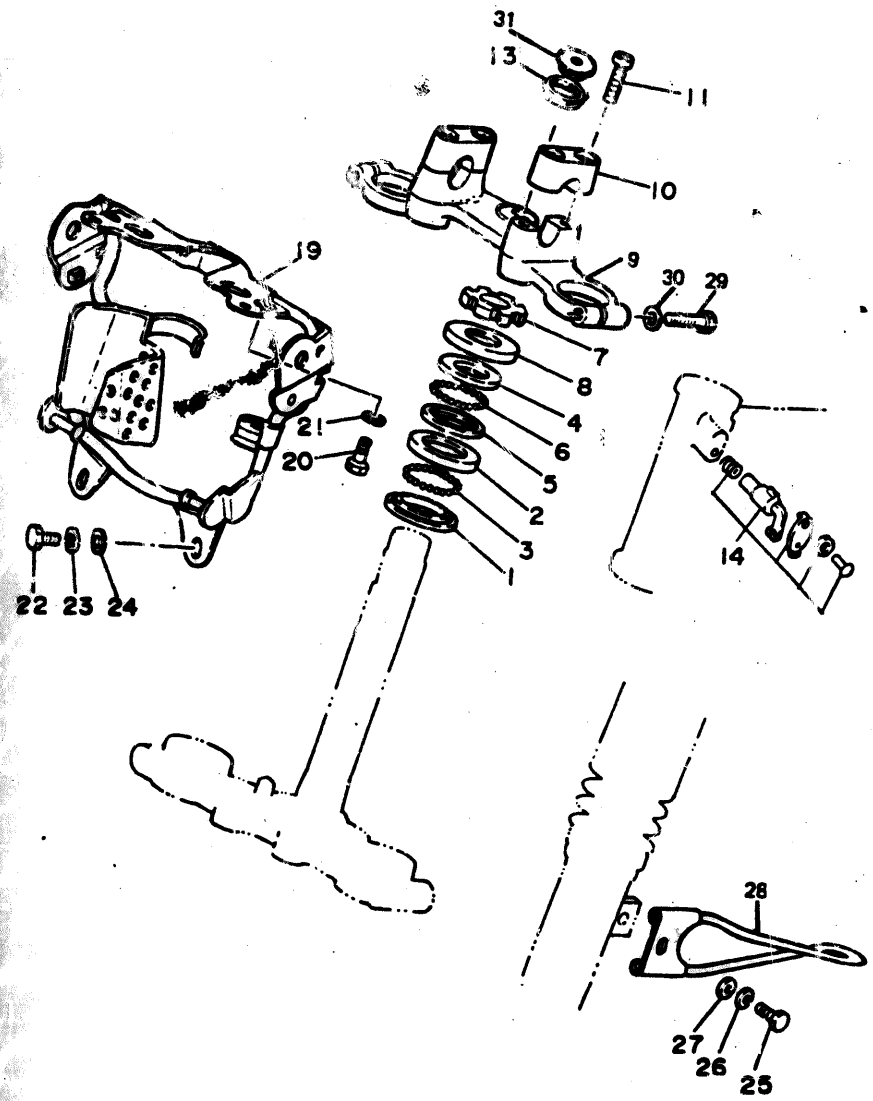


FIG. 20 STEERING

REF	PART NO	DESCRIPTION	QTY	REMARKS
1	156-23411-00	RACE, BALL 1	1	
2	156-23412-00	RACE, BALL 2	1	
3	92906-06100	BALL	19	
4	122-23411-00	RACE, BALL 1	1	
5	122-23412-00	RACE, BALL 2	1	
6	92503-16010	BALL	22	
7	3HL-F3443-10	NUT	1	
8	5TG-F3416-00	COVER, BALL RACE 2	1	
9	3HL-F3435-10	CROWN, HANDLE	1	ORION SILVER
10	3HL-F3441-10	HOLDER HANDLE HUPPER	2	ORION SILVER
11	3HL-F3459-10	SCREW	4	
12	92906-08600	WASHER, PLATE	6	
13	3HL-F3454-10	PIVOT NUT	1	
14	5TB-F3482-00	STEERING LOCK ASSY	1	
19	1NN-F3174-00-11	STAY, HEADLIGHT	1	
20	97313-08016	BOLT	2	
21	92990-08100	WASHER, SPRING	2	
22	97016-06016	BOLT	2	
23	92906-06100	WASHER, SPRING	2	
24	92906-06600	WASHER, PLATE	2	
25	97001-06025	BOLT	1	
26	92906-06100	WASHER, SPRING	1	
27	92906-06600	WASHER, PLATE	1	
28	3HL-F3318-00	HOLDER CABLE	1	

3WR1321-9200

FIG. 26 STEERING



REF	PART NO	DESCRIPTION	QTY	REMARKS
29	3HL-F3452-10	SECURING SCREW	2	
30	3HL-F3457-10	WASHER	1	
31	3HL-F3469-00	PIVOT STOPPER	1	

3371521-0200

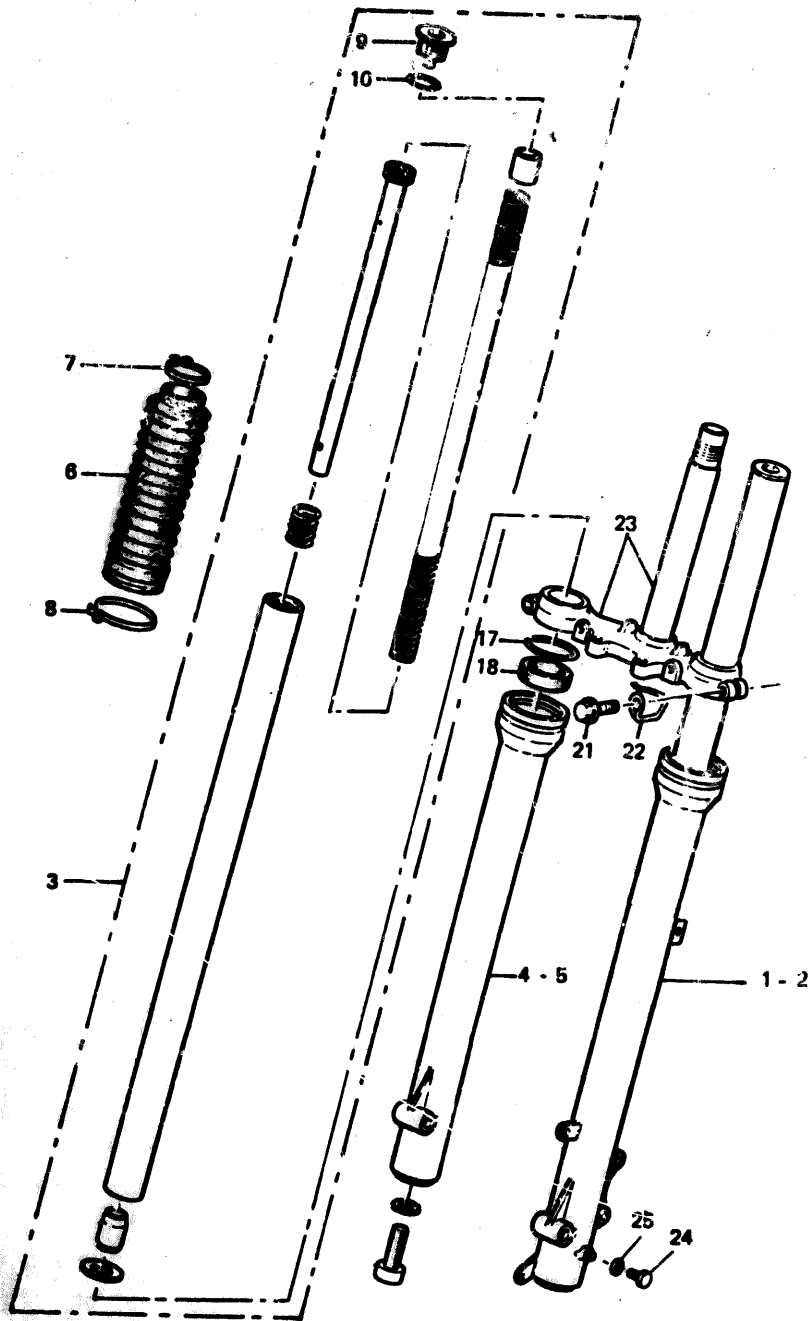
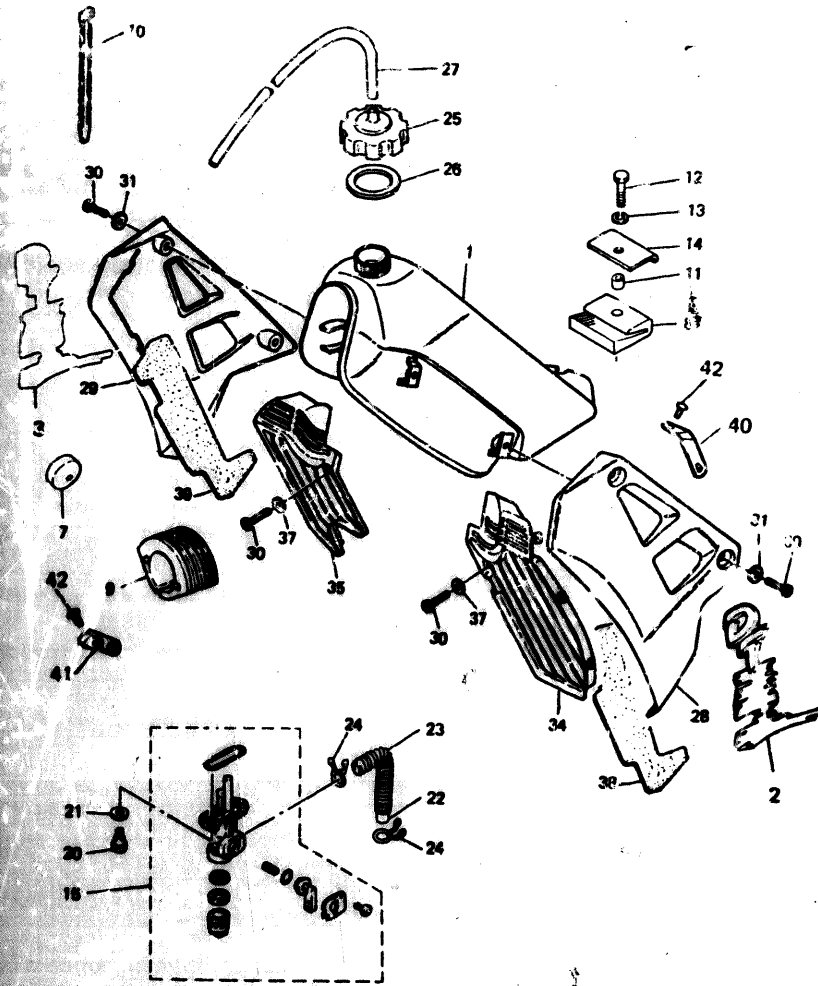


FIG. 21 FRONT FORK

REF	PART NO	DESCRIPTION	QTY	REMARKS
1	3HL-F3360-00	FRONT FORK ASSY 1	1	
2	3HL-F3370-00	FRONT FORK ASSY 2	1	
3	3HL-F3110-00	INNER TUBE ASSY R OR L	2	
4	3HL-F3120-10	OUTER TUBE 1	1	SILVER
5	3HL-F3136-00	OUTER TUBE 2	1	SILVER
6	3HL-F3191-40	BOOT VIVID MAGENTA	2	UR PW.YR.
	3HL-F3191-30	BOOT BLUISC GREEN	2	UR DV.
7	3HL-F3192-00	BAND SMALLER DIAMETER	2	
8	3HL-F3192-10	BAND LARGER DIAMETER	2	
9	3HL-F3111-00	PLUG INNER TUBE	1	
10	3HL-F3114-00	O-RING	2	
11	3HL-F3156-00	CIRCLIP	2	
12	3HL-F3145-00	OIL SEAL	2	
13	3HL-F3451-10	SCREW	1	
14	5JO-23317-00	HOLDER CABLE	1	
15	3HL-F3340-10	UNDER BRACKET COMP.	1	
16	3HL-F3119-00	PLUG	2	
17	3HL-F3129-00	GASKET	2	

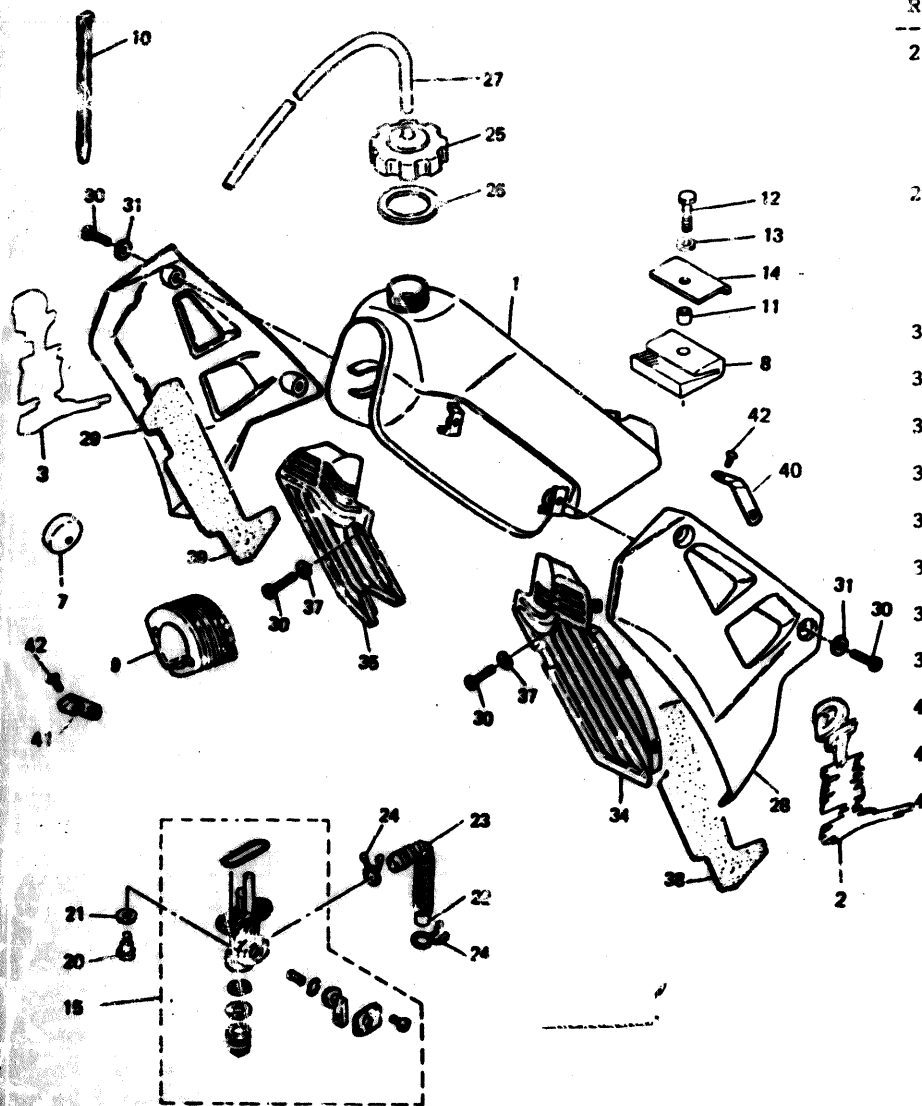
FIG.22 FUEL TANK



3HR1321-0220

REF	PART NO	DESCRIPTION	QTY	REMARKS
1	3HL-F4110-00-17	FUEL TANK COMP.VIOLET	1	UR DEEP VIOLET
	3HL-F4110-00-13	FUEL TANK COMP.BLACK	1	JR YAMAHA BLACK
	3HL-F4110-00-16	FUEL TANK COMP.WHITE	1	UR PURPLISH WHITE
2	3HL-F179L-00	GRAPHIC,DTR 1	1	UR FOR PURPLISH WHITE
	3HL-F179L-10	GRAPHIC,DTR 1	1	UR FOR YAMAHA BLACK
	3HL-F179L-20	GRAPHIC,DTR 1	1	UR FOR DEEP VIOLET
3	3HL-F179M-00	GRAPHIC,DTR 2	1	UR FOR PURPLISH WHITE
	3HL-F179M-10	GRAPHIC,DTR 2	1	UR FOR YAMAHA WHITE
	3HL-F179M-20	GRAPHIC,DTR 2	1	UR FOR DEEP VIOLET
7	26H-F4181-00	DAMPER,LOCATING 1	2	
8	5T8-F4182-01	DAMPER,LOCATING 2	1	
9	34L-24184-00	DAMPER,LOCATING 4	1	
10	90464-14117	CLAMP	2	
11	90387-06825	COLLAR	1	
12	97021-06030	BOLT	1	
13	92990-06100	WASHER, SPRING	1	
14	5T8-F4186-00	WASHER, SPECIAL	1	
15	5T8-F4500-01	FUEL COCK ASSY 1	1	
20	90149-06011	SCREW	2	
21	90202-06010	WASHER, PLATE	2	
22	3HL-24311-00	PIPE, FUEL 1	1	
23	90501-08410	SPRING, COMPRESSION	1	
24	90467-08003	CLIP	2	
25	5T8-F4611-00	BODY, CAP	1	
26	5T8-F4612-00	GASKET, CAP	1	
27	90445-09100	HOSE	1	

FIG.22 FUEL TANK



REF	PART NO	DESCRIPTION	QTY	REMARKS
28	3HL-F172A-40	SCOOP,AIR 1 WHITE	1	UR PURPLISH WHITE
	3HL-F172A-10	SCOOP,AIR 1 BLACK	1	UR YAMAHA BLACK
	3HL-F172A-50	SCOOP,AIR 1 VIOLET	1	UR DEEP VIOLET
29	3HL-F172G-40	SCOOP,AIR 2 WHITE	1	UR PURPLISH WHITE
	3HL-F172G-10	SCOOP,AIR 2 BLACK	1	UR YAMAHA BLACK
	3HL-F172G-50	SCOOP,AIR 2 VIOLET	1	UR DEEP VIOLET
30	98506-06012	SCREW,PAN HEAD	8	
31	90201-06059	WASHER,PLATE	8	
34	3HL-F172F-00	AIR LEAK GRILLE 1	1	UR BLACK
35	3HL-F172H-00	AIR LEAK GRILLE 2	1	UR BLACK
36	3HL-F4164-00	CAUTION SELF-STICK	1	
37	90201-062A8	WASHER	4	
38	3HL-F414H-00	DAMPER PLATE 1	1	
39	3HL-F414J-00	DAMPER PLATE 2	1	
40	3HL-F172K-00	BRACKET 1	1	
41	3HL-F172L-00	BRACKET 2	1	
42	3HL-F1728-00	RIVET	4	

3881521-0220

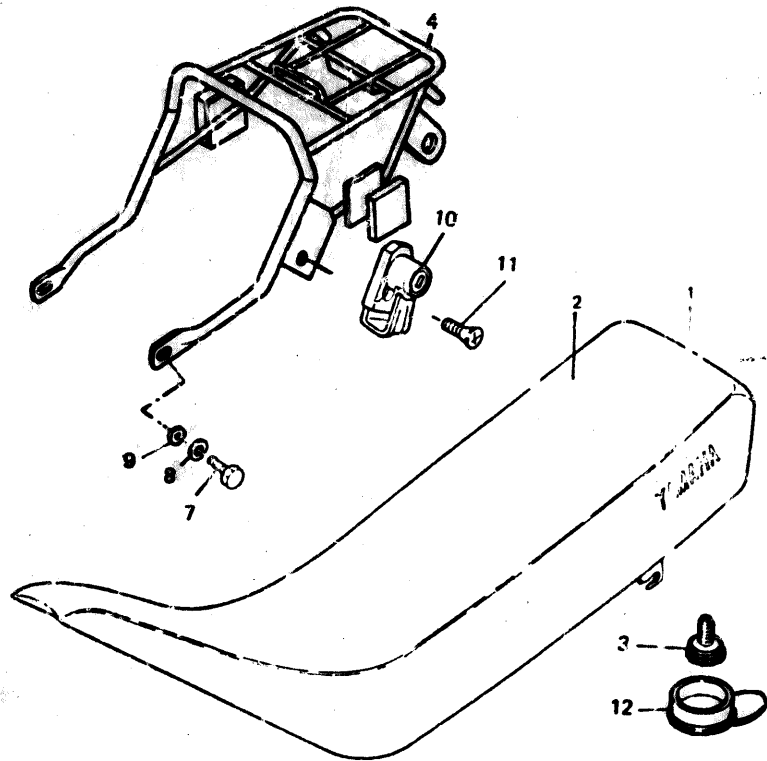


FIG. 23 SEAT

REF	PART NO	DESCRIPTION	QTY	REMARKS
1	3HL-F4730-70	SINGLE SEAT VIVID MAG.	1	UR PURPLISH WHITE
	3HL-F4730-80	SINGLE SEAT FARAWAY B.	1	UR YAMAHA BLACK
	3HL-F4730-90	SINGLE SEAT S.FINE SILV	1	UR DEEP VIOLET
2	3HL-F4731-70	COVER SEAT VIVID MAG.	1	
	3HL-F4731-80	COVER SEAT FARAWAY BL.	1	
	3HL-F4731-90	COVER SEAT F.SILVER	1	
3	3HL-F4739-00	BOLT, SEAT FITTING	2	
4	3HL-F4830-00-11	SUB CARRIER ASSY	1	LOW GLOSS BLACK
7	97026-08014	BOLT HEX.W/WASHER	2	
8	92906-06100	WASHER SPRING	2	
9	92906-08600	WASHER PLATE	2	
10	5T8-F1398-00	HANGER, HELMET	1	
11	98701-06018	SCREW, FLAT HEAD	1	
12	3HL-F4742-00	GROMMET	1	

3MP1341-9230

C14

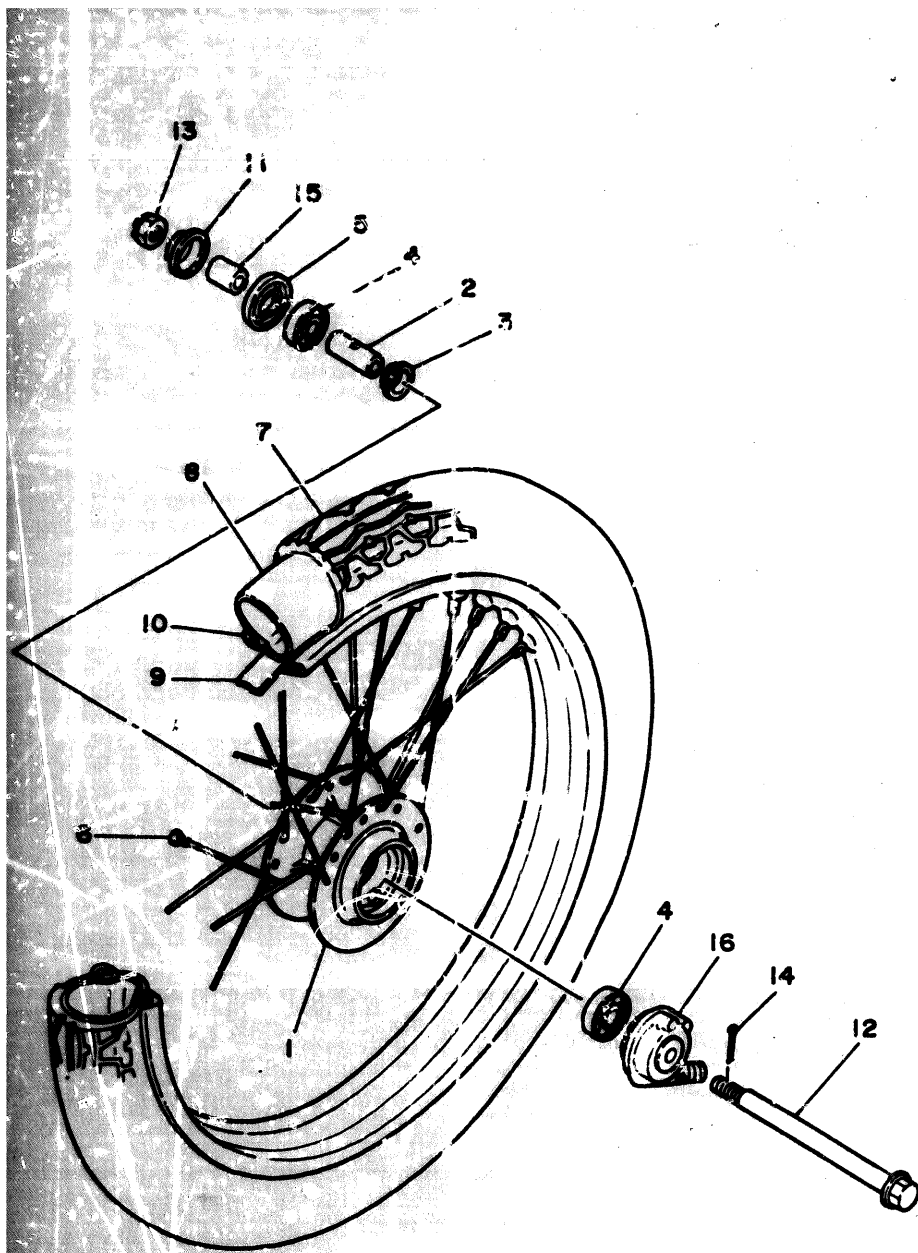


FIG. 24 FRONT WHEEL

REF	PART NO	DESCRIPTION	QTY	REMARKS
1	3HL-F5111-10-12	HUB, FRONT	1	ORION SILVER
2	90560-12208	SPACER	1	
3	5T8-F5315-00	FLANGE, SPACER	1	
4	93306-301Y2	BEARING (6301Z)	2	
5	93102-18008	OIL SEAL	1	
6	3HL-25104-10	SPOKE SET FRONT	1	
7	94170-218A1	TIRE	1	
8	94225-21812	TUBE (2.50-21)	1	
9	94330-21814	BAND, RIM (3.00-21)	1	
10	94416-21471	RIM (1.60-21)	1	
11	5T8-F5118-00	COVER, HUB DUST	1	
12	5T8-F5181-00	AXLE, WHEEL	1	
13	90171-12015	NUT, CASTLE	1	
14	91401-30030	PIN, COTTER	1	
15	90387-12283	COLLAR	1	
16	3HL-25190-10	GEAR UNIT ASSY	1	

HL2301-8220

# CONTENTS

## ENGINE

CYLINDER .....	B2
CRANKSHAFT. PISTON .....	B3
OIL PUMP .....	B4
INTAKE .....	B5
CARBURETOR .....	B6 - B7
EXHAUST .....	B8
CRANKCASE .....	B9
CRANKCASE COVER 1 .....	B10
STARTER .....	B11
CLUTCH .....	B12 - B13
TRANSMISSION .....	B14
SHIFT CAM. FORK .....	B15
SHIFT SHAFT .....	C2

## CHASSIS

FRAME .....	C3
FENDER .....	C4
SIDE COVER .....	C5
OIL TANK .....	C6
REAR ARM .....	C7

REAR SUSPENSION .....	C8
STEERING .....	C9-C10
FRONT FORK .....	C11
FUEL TANK .....	C12-C13
SEAT .....	C14
FRONT WHEEL .....	C15
FRONT BRAKE CALIPER .....	D2
REAR. WHEEL .....	D3-D4
STEERING HANDLE CABLE .....	D5
FRONT MASTER CYLINDER .....	D6
STAND. FOOTREST .....	D7
COWLING 1 .....	D8
GENERATOR .....	D9
FLASHER LIGHT .....	D10
METER .....	D11
HEADLIGHT .....	D12
TAILLIGHT .....	D13
HANDLE SWITCH. LEVER .....	D14
ELECTRICAL 1 .....	D15-E2

## INDEX

NUMERICAL INDEX .....	M1 ~M2
-----------------------	--------



# CONTENTS

## ENGINE

CYLINDER .....	B2
CRANKSHAFT. PISTON .....	B3
OIL PUMP .....	B4
INTAKE .....	B5
CARBURETOR .....	B6 - B7
EXHAUST .....	B8
CRANKCASE .....	B9
CRANKCASE COVER 1 .....	B10
STARTER .....	B11
CLUTCH .....	B12 - B13
TRANSMISSION .....	B14
SHIFT CAM. FORK .....	B15
SHIFT SHAFT .....	C2

## CHASSIS

FRAME .....	C3
FENDER .....	C4
SIDE COVER .....	C5
OIL TANK .....	C6
REAR ARM .....	C7

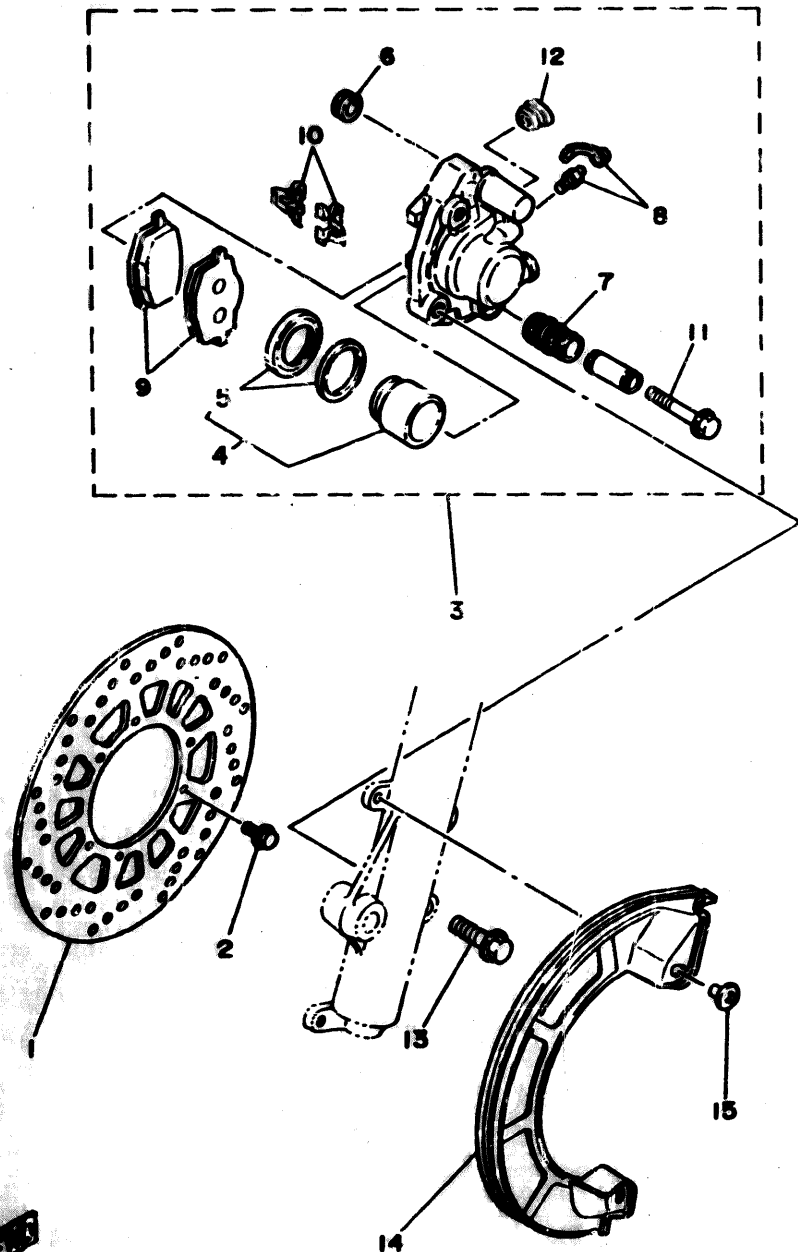
REAR SUSPENSION .....	C8
STEERING .....	C9-C10
FRONT FORK .....	C11
FUEL TANK .....	C12-C13
SEAT .....	C14
FRONT WHEEL .....	C15
FRONT BRAKE CALIPER .....	D2
REAR. WHEEL .....	D3-D4
STEERING HANDLE. CABLE .....	D5
FRONT MASTER CYLINDER .....	D6
STAND. FOOTREST .....	D7
COWLING 1 .....	D8
GENERATOR .....	D9
FLASHER LIGHT .....	D10
METER .....	D11
HEADLIGHT .....	D12
TAILLIGHT .....	D13
HANDLE SWITCH. LEVER .....	D14
ELECTRICAL 1 .....	D15-E2

## INDEX

NUMERICAL INDEX .....	M1 ~M2
-----------------------	--------

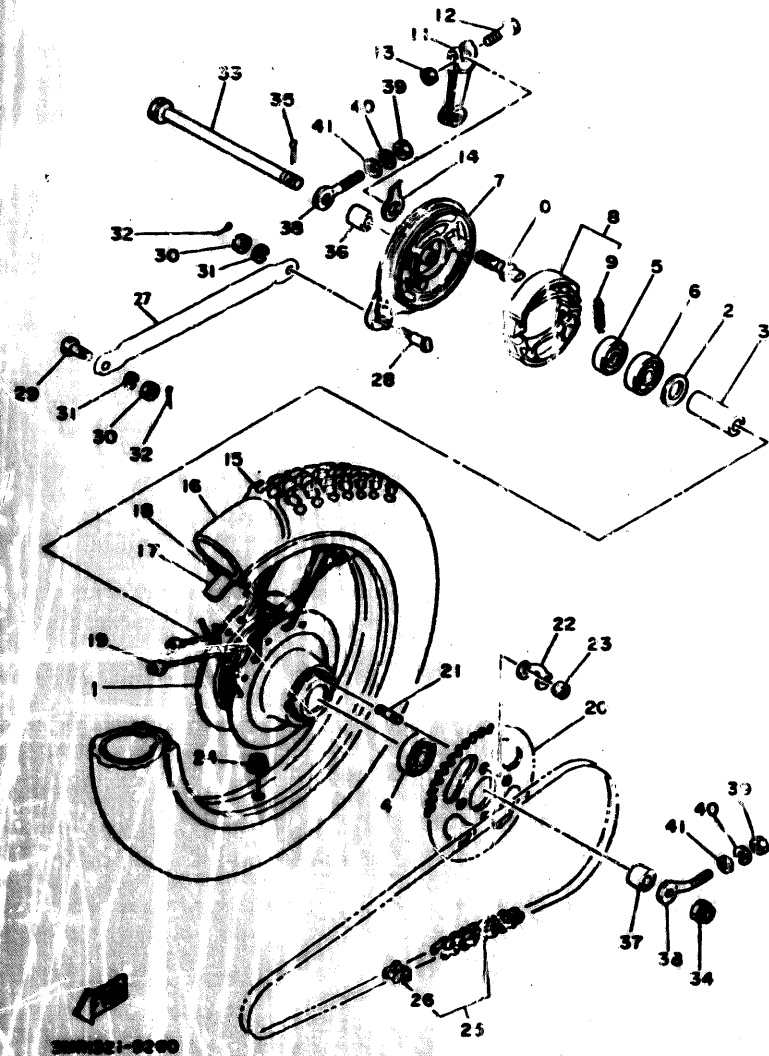
FIG. 25 FRONT BRAKE CALIPER

REF	PART NO	DESCRIPTION	QTY	REMARKS
1	34X-25831-00	DISC, BRAKE (RIGHT)	1	
2	90109-76757	BOLT	1	
3	34X-2580T-00	CALIPER ASSY (LEFT)	1	
4	34X-W0057-00	.PISTON ASSY, CALIPER	1	
5	34X-W0047-00	..CALIPER SEAL KIT	1	
6	5R2-25917-00	.BOOT, CALIPER	1	
7	34X-25937-00	.BOOT 2	1	
8	51L-W0043-00	.BREED SCREW KIT	1	
9	34X-W0046-02	.BRAKE PAD KIT, REAR	1	
10	34X-25919-00	.SUPPORT, PAD	2	
11	34X-25926-00	.BOLT	1	
12	34X-25845-00	.CAP, INDICATOR	1	
13	90105-10308	BOLT, WASHER BASED	2	
14	3HL-25715-40	COVER 1 WHITE	1	UR PURPLISH WHITE
	3HL-25715-50	COVER 1 BLACK	1	UR YAMAHA BLACK
	3HL-25715-60	COVER 1 VIOLET	1	UR DEEP VIOLET
15	90149-06194	SCREW	2	



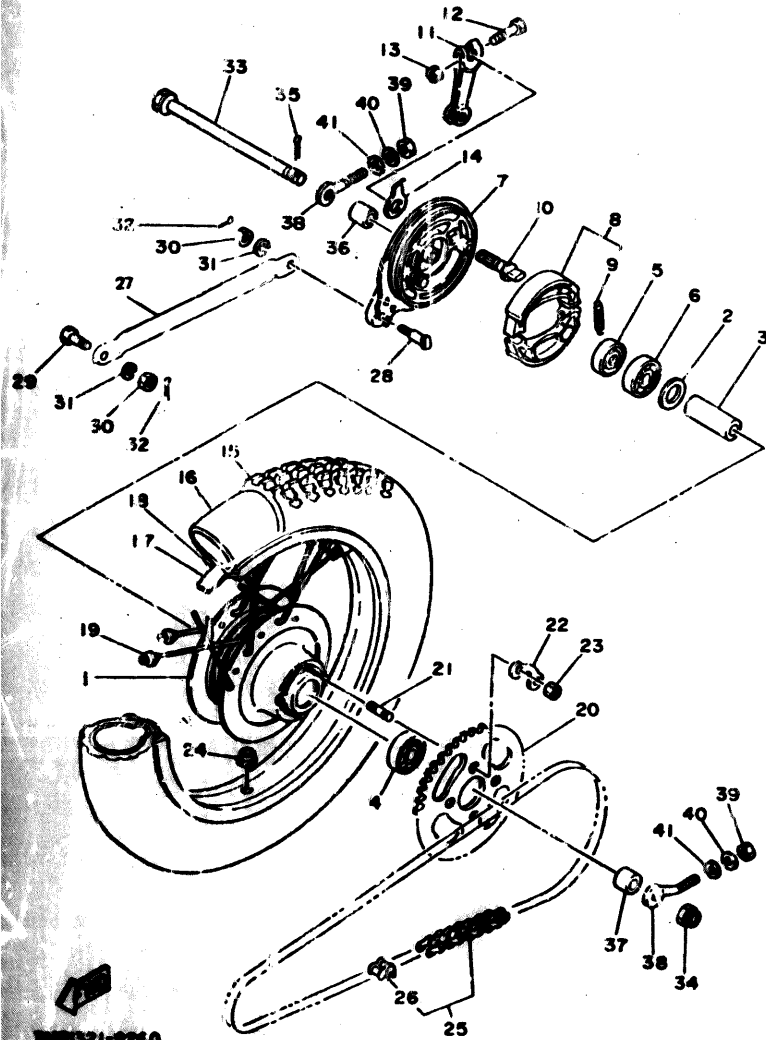
3HL2551-8230

FIG. 2c REAR WHEEL

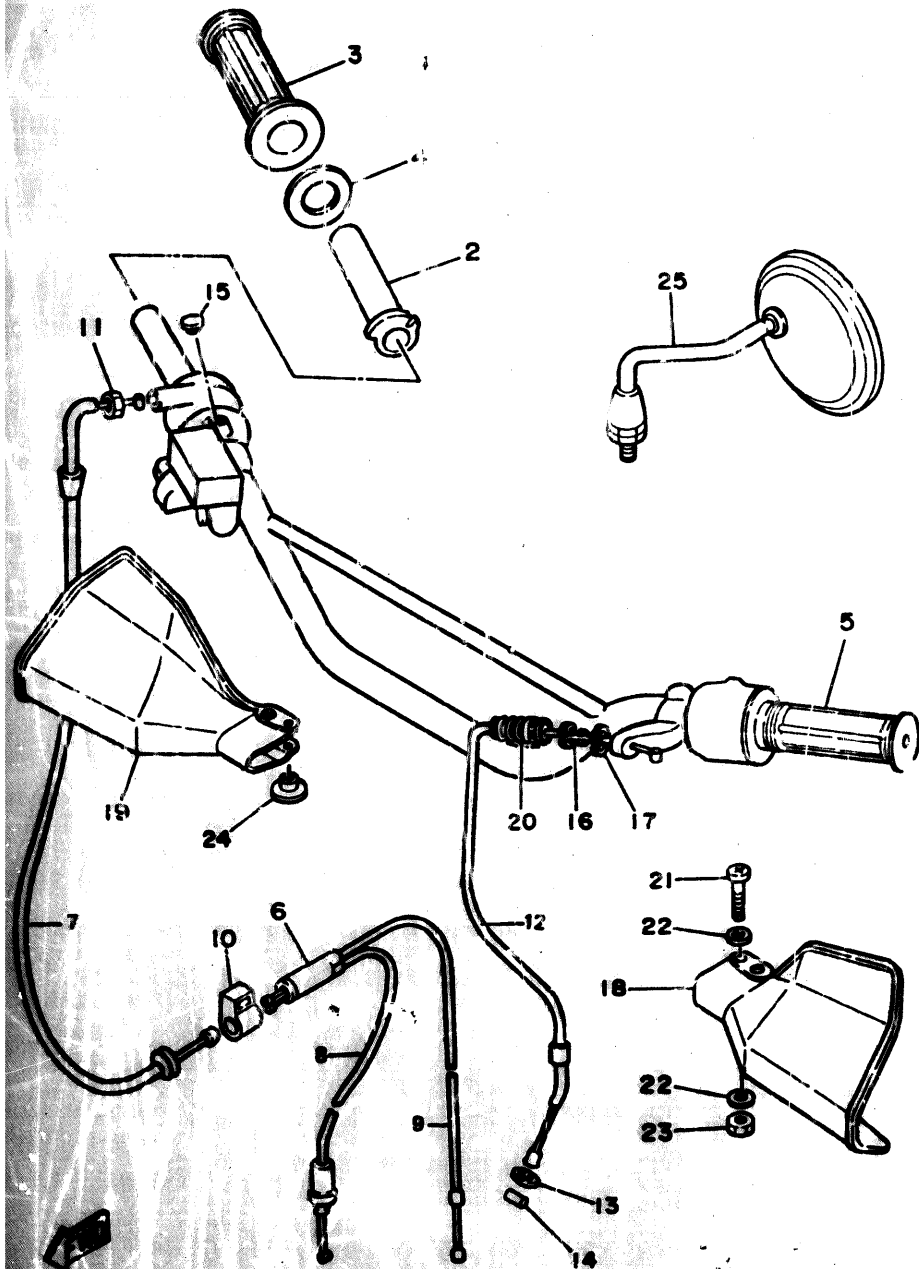


REF	PART NO	DESCRIPTION	QTY	REMARKS
1	5T8-F5311-10-12	HUB, REAR	1	ORION SILVER
2	5T8-F5315-00	FLANGE, SPACER	1	
3	90560-12207	SPACER	1	
4	93306-301Y1	BEARING (6301)	1	
5	93106-20002	OIL SEAL	1	
6	93306-301Y0	BEARING (63010)	1	
7	5T8-F5321-03	PLATE, BRAKE SHOE	1	
8	2JL-W2536-01	BRAKE SHOE KIT 2	1	
9	90506-18288	.SPRING, TENSION	2	
10	3Y6-25351-00	CAMSHAFT	1	
11	5R0-25355-00	LEVER, CAMSHAFT	1	
12	90101-06278	BOLT	1	
13	95601-06100	NUT, U	1	
14	5T8-F533A-00	PLATE, INDICATOR	1	
15	94190-188A2	TIRE	1	
16	94232-18838	TUBE (3.25-18)	1	
17	94332-18833	BAND, RIM (3.25-18)	1	
18	94418-18171	RIM (1.85-13)	1	
19	5T0-25304-00	SPOKE SET REAR	1	
20	492-25448-10	SPROCKET, DRIVEN (48T)	1	
21	90116-08804	BOLT, STUD	4	
22	5T8-F5412-01	WASHER	2	
23	90170-08258	NUT	4	
24	90338-09130	PLUG	1	
25	94580-52122	CHAIN	1	
26	94680-52001	.JOINT, CHAIN (DID. 420M)	1	
27	3HL-F5371-00-11	BAR, TENSION	1	
28	90109-08183	BOLT	1	

FIG. 26 REAR WHEEL



REF	PART NO	DESCRIPTION	QTY	REMARKS
29	90109-08368	BOLT	1	
30	95303-08700	NUT	2	
31	92990-06100	WASHER, SPRING	2	
32	91401-20020	PIN, COTTER	2	
33	5T8-F5381-00	AXLE, WHEEL	1	
34	90171-12015	NUT, CASTLE	1	
35	91401-20130	PIN, COTTER	1	
36	90387-12819	COLLAR	1	
37	90387-12820	COLLAR	1	
38	1MK-F5389-00	PULLER, CHAIN 2	2	
39	95303-06600	NUT	2	
40	92990-06100	WASHER, SPRING	2	
41	92901-06600	WASHER, PLATE	2	



WR1521-9270

FIG. 27 STEERING HANDLE CABLE

REF	PART NO	DESCRIPTION	QTY	REMARKS
1	3HL-F6111-00-13	HANDLEBAR	1	GRDN SILVER
2	434-26243-00	TUBE, THROTTLE GUIDE	1	
3	5T8-F6242-00	GRIP (R.H.)	1	
4	1M1-26249-01	RING, LEAF	1	
5	5T8-F6241-00	GRIP	1	
6	5T8-F6261-00	CONNECTOR, CABLE	1	
7	3HL-F6311-10	CABLE, THROTTLE 1	1	
8	3HL-F6312-00	CABLE, THROTTLE 2	1	
9	4AD-F6321-00	CABLE, PUMP	1	
10	5T8-F6393-01	HOLDER	1	
11	90170-10038	NUT	1	
12	3MR-F6335-00	CABLE, CLUTCH	1	
13	92901-06600	WASHER, PLATE	1	
14	5T8-F6363-00	END, CABLE	1	
15	90338-09012	PLUG	1	
16	90123-08046	BOLT	1	
17	90179-08148	NUT	1	
18	3BN-26141-20	GUARD, BRUSH 1 WHITE	1	UR PURPLISH WHITE
	2KF-26141-00	GUARD, BRUSH 1 BLACK	1	UR YAMAHA BLACK
	3TB-26141-50	GUARD, BRUSH 1 VIOLET	1	UR DEEP VIOLET
19	3BN-26142-20	GUARD, BRUSH 2 WHITE	1	UR PURPLISH WHITE
	2YK-26142-10	GUARD, BRUSH 2 BLACK	1	UR YAMAHA BLACK
	3BN-26142-30	GUARD, BRUSH 2 VIOLET	1	UR DEEP VIOLET
20	1E6-26342-00	BOOT, CABLE	1	
21	98501-06035	SCREW, PAN HEAD	1	
22	92901-06600	WASHER, PLATE	2	
23	95303-06700	NUT	1	
24	90387-06500	COLLAR	1	
25	55V-26280-00	REAR VIEW MIRROR ASSY L	1	

D5

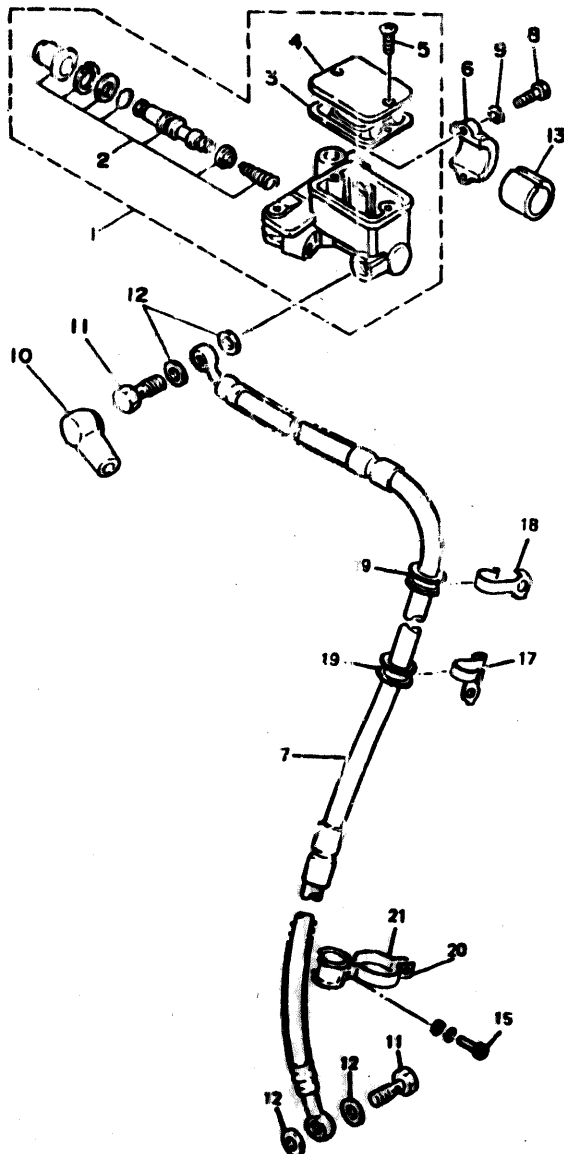


FIG. 28 FRONT MASTER CYLINDER

REF	PART NO	DESCRIPTION	QTY	REMARKS
1	2KF-25850-00	MASTER CYLINDER ASSY	1	
2	59X-W0041-00	CYLINDER KIT, MASTER	1	
3	55U-25854-00	.DIAPHRAGM RESERVOIR	1	
4	2KF-25852-01	.CAP, RESERVOIR	1	
5	98706-04012	.SCREW, PAN HEAD	2	
6	56A-25367-00	BRACKET, MASTER CYLINDER	1	
7	3HL-25872-12	HOSE, BRAKE 1	1	
8	97016-06025	BOLT	2	
9	92906-06100	WASHER, SPRING	2	
10	4L0-25862-00	BOOT, MASTER CYLINDER	1	
11	90401-10034	BOLT, UNION	2	
12	90201-10118	WASHER, PLATE	4	
13	90387-225N2	COLLAR	1	
15	97506-06618	SCREW	2	
17	3HL-F3319-20	WIRE HOLDER 1	1	
18	3HL-F3319-30	WIRE HOLDER 2	2	
19	3HL-F3389-00	GUIDE WIRE	2	
20	3HL-F3318-10	WIRE HOLDER 1	1	
21	3HL-F3318-20	WIRE HOLDER 2	1	

34711 321-0200

D6

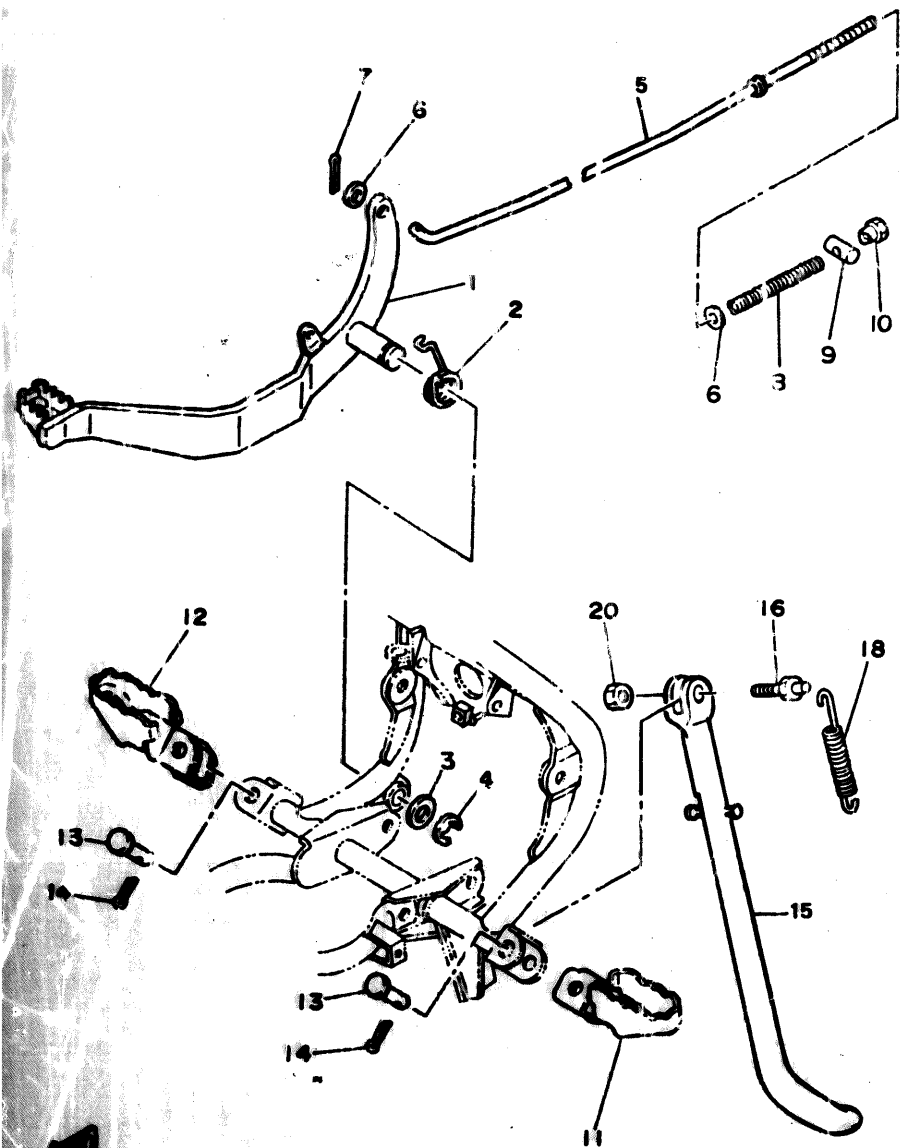


FIG. 29 STAND, FOOTREST

REF	PART NO	DESCRIPTION	QTY	REMARKS
1	20L-F7211-00	PEDAL, BRAKE	1	
2	90503-32354	SPRING, TORSION	1	
3	90201-14813	WASHER, PLATE	1	
4	93430-10803	CIRCLIP	1	
5	VMP-17231-00	ROD, BRAKE	1	
6	92901-06600	WASHER, PLATE	2	
7	91401-20020	PIN, COTTER	1	
8	90501-10245	SPRING, COMPRESSION	1	
9	90249-12008	FIN	1	
10	90179-06176	NUT	1	
11	20L-F7411-00	FOOTREST 1	1	
12	20L-F7421-00	FOOTREST 2	1	
13	91701-08038	FIN, CLEVIS	2	
14	91401-20020	PIN, COTTER	2	
15	1NN-F7311-00-11	STAND, SIDE	1	
16	90109-08031	BOLT	1	
18	90506-20047	SPRING, TENSION	2	
20	95303-08700	NUT	1	

132-2230

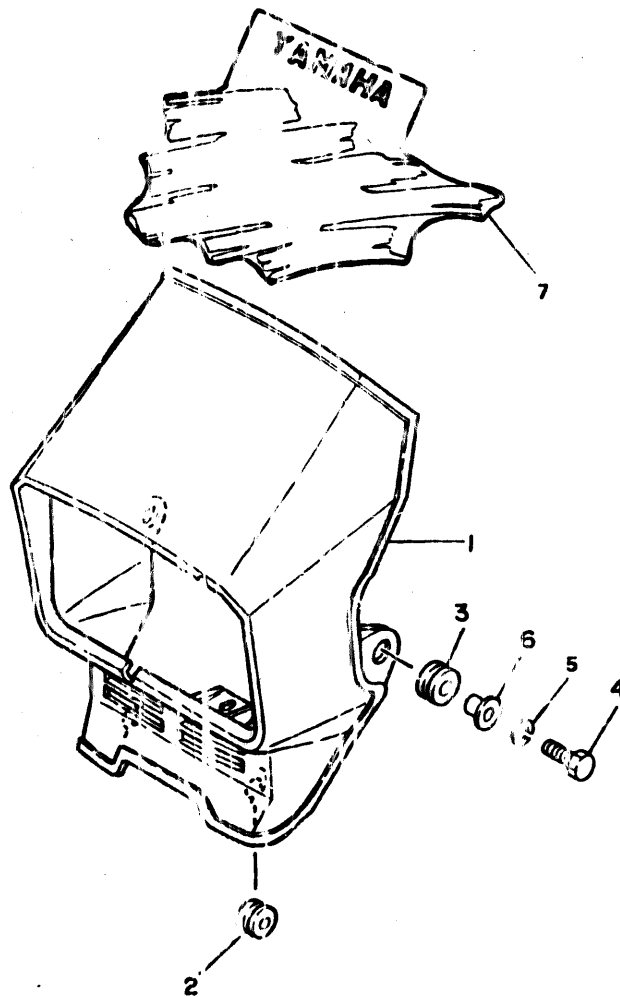
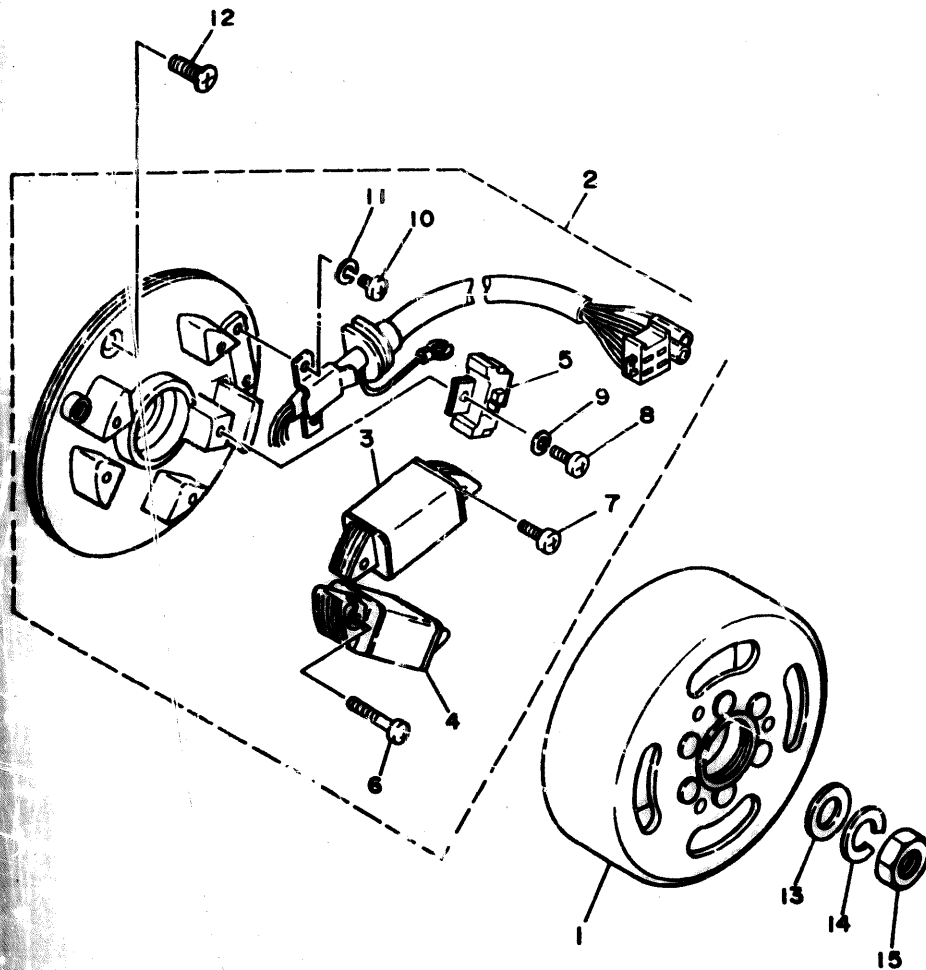


FIG. 30 COWLING 1

REF	PART NO	DESCRIPTION	QTY	REMARKS
1	4AD-F8351-00-12	BODY, COWLING BLACK	1	UR YAMAHA BLACK
	4AD-F8351-00-11	BODY, COWLING WHITE	1	UR PURPLISH WHITE
	4AD-F8351-00-13	BODY, COWLING VIOLET	1	UR DEEP VIOLET
2	90480-12053	GROMMET	2	
3	90480-14023	GROMMET	2	
4	97001-06025	BOLT	2	
5	92906-06100	WASHER SPRING	2	
6	90387-07391	COLLAR	2	
7	3HL-F8368-80	EMBLEM	1	UR FOR PURPLISH WHITE
	3HL-F8368-90	EMBLEM	1	UR FOR YAMAHA BLACK
	3HL-F8368-A0	EMBLEM	1	UR FOR DEEP VIOLET
<u>NOT ILLUSTRATED</u>				
	29J-85132-00	BRACKET REFLECTOR	1	
	90267-40110	RIVET BLIND	2	
	90201-044A2	WASHER PLATE	2	
	34U-85110-00	REFLECTOR	1	
	95701-05500	NUT FLANGE	1	



FIG. 31 GENERATOR



REF	PART NO	DESCRIPTION	QTY	REMARKS
1	3MR-85550-00	ROTOR ASSY	1	
2	3MP-85560-00	BASE ASSY	1	
3	5G3-85520-M1	.COIL, CHARGE	1	
4	2AL-81313-M0	.COIL, LIGHTING 1	1	
5	3HL-85580-00	.COIL, PULSER	1	
6	98511-04025	.SCREW, PAN HEAD	2	
7	98511-04012	.SCREW, PAN HEAD	2	
8	98580-04010	.SCREW, PAN HEAD	1	
9	92901-04100	.WASHER, SPRING	1	
10	98501-04006	.SCREW, PAN HEAD	2	
11	92901-04100	.WASHER, SPRING	2	
12	98701-05016	SCREW, FLAT HEAD	2	
13	90201-12535	WASHER, PLATE	1	
14	92901-12100	WASHER, SPRING	1	
15	90170-12175	NUT	1	

3MR321-9310

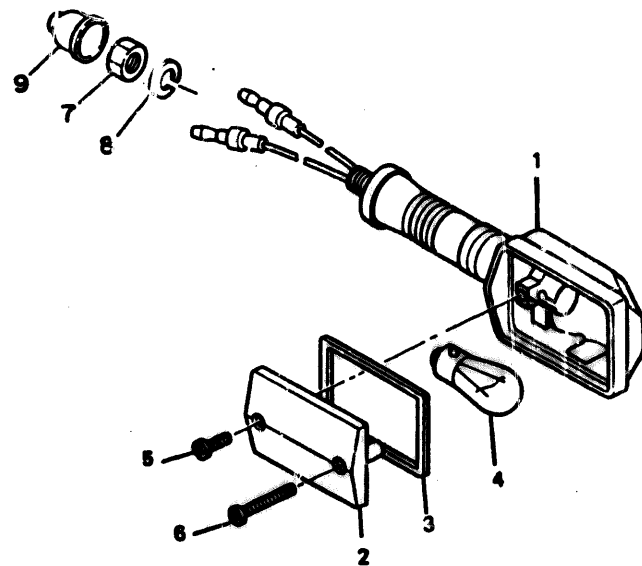
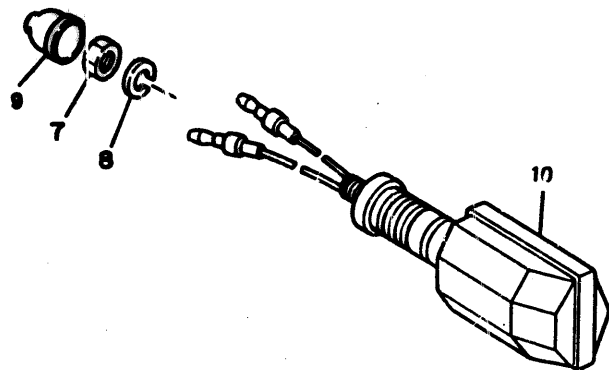


FIG.32 FLASHER LIGHT

REF	PART NO	DESCRIPTION	QTY	REMARKS
1	3HL-H3310-00	FRONT FLASHER LIGHT ASS	2	
2	5T8-H3312-10	LENS FLASHER	4	
3	5T8-H3313-10	GASKET	4	
4	3HL-H3331-00	BULB 12V-10W	4	
5	98580-C4010	SCREW	4	
6	97706-40530	SCREW	4	
7	95303-12600	NUT	4	
8	92901-12100	WASHER, SPRING	4	
9	10V-83365-00	CAP	4	
10	3HL-H3330-00	REAR FLASHER LIGHT ASSY	2	

3HL255-8300

D10

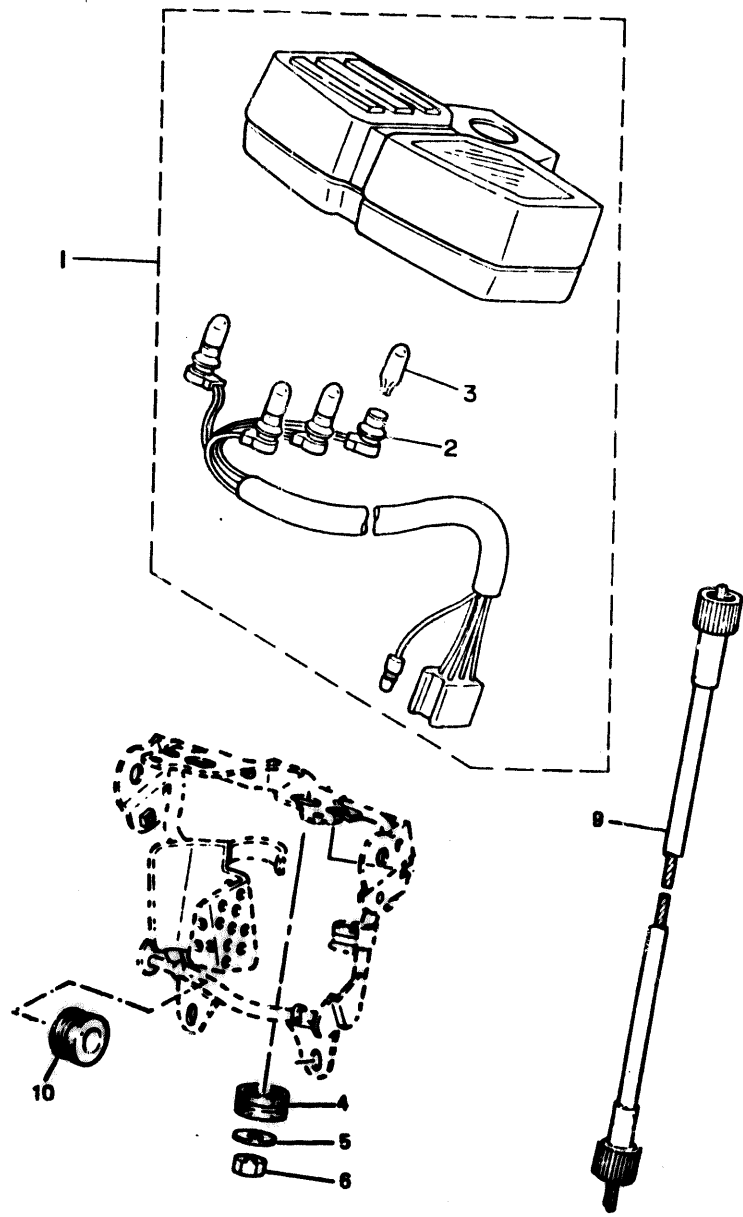
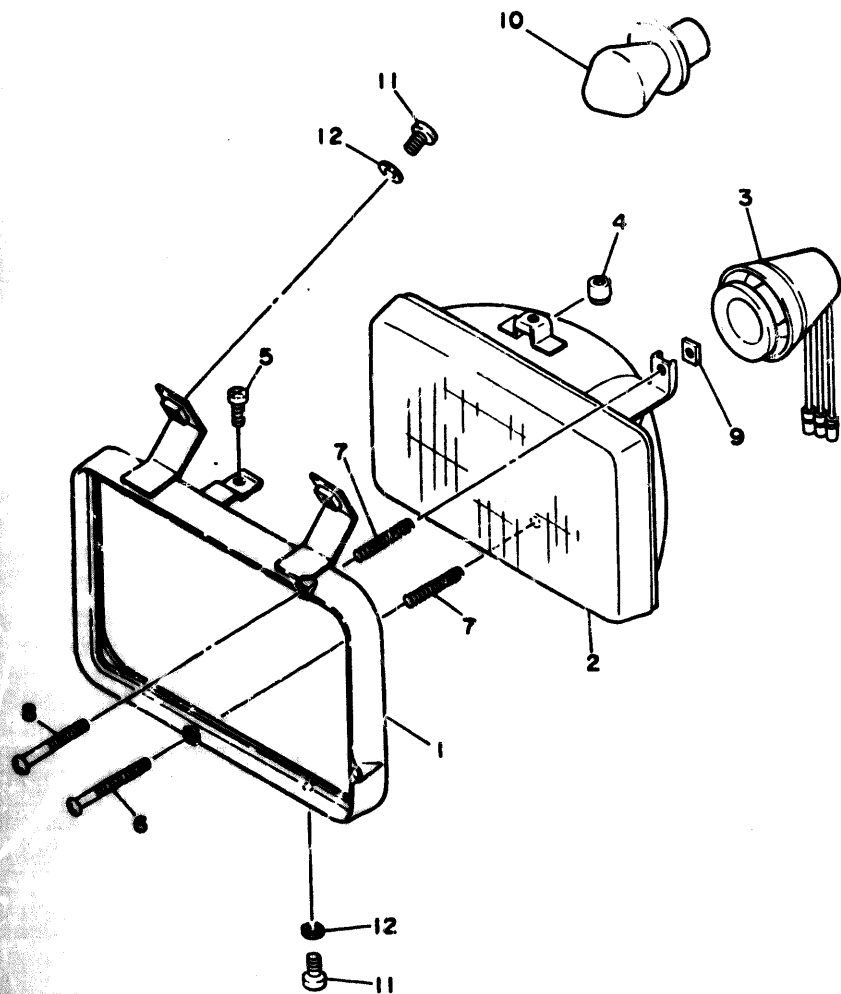


FIG. 33 METER

REF	PART NO	DESCRIPTION	QTY	REMARKS
1	3MP-83510-00	SPEEDOMETER ASSY	1	
2	3MP-83520-00	. SOCKET CORD ASSY	1	
3	4G1-84744-00	. BULB (12V-3.4W)	4	
4	5T6-H3513-00	DAMPER	2	
5	5T8-H3524-00	WASHER, SPECIAL	2	
6	95303-06600	NUT	2	
9	3HL-F3550-10	SPEEDOMETER CABLE ASSY	1	
10	9048C-12053	DAMPER	2	

END  
 3MR1321-9320

FIG. 34 HEADLIGHT

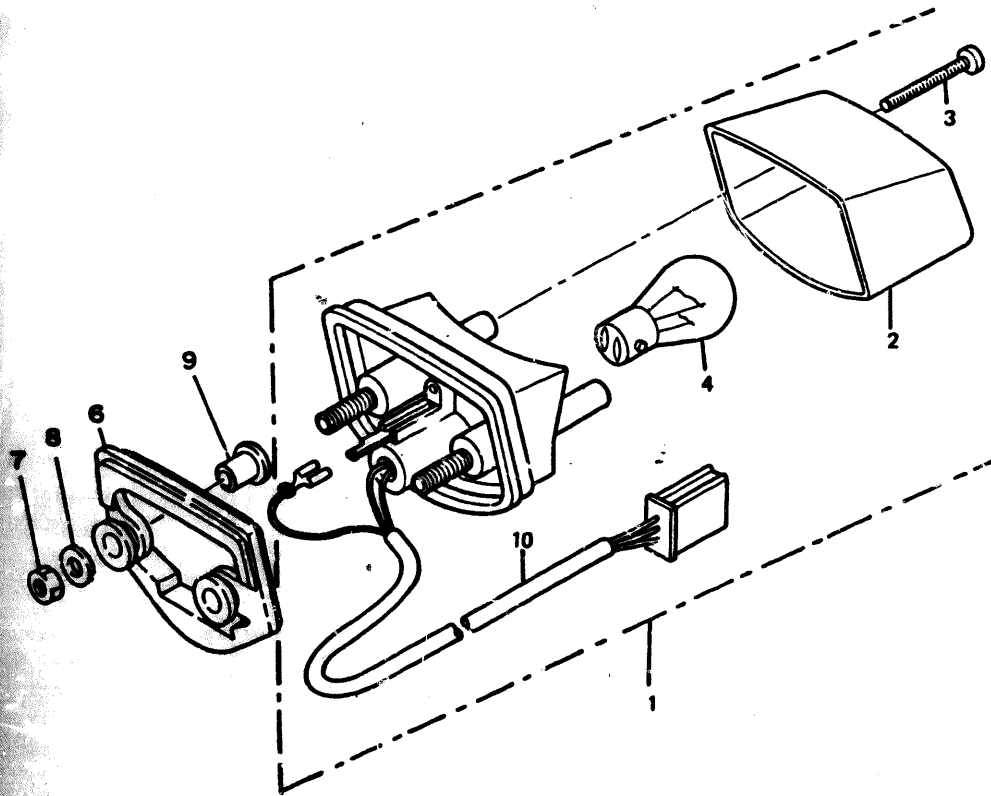


REF	PART NO	DESCRIPTION	QTY	REMARKS
1	1NN-84315-00	RIM, HEADLIGHT	1	
2	3MR-84320-00	LENS ASSY	1	
3	3MR-84340-00	SOCKET CORD ASSY 1	1	
4	25G-84326-H0	NUT	1	
5	98501-05010	SCREW, PAN HEAD	1	
6	1NN-84131-10	SCREW, RIM ADJUSTER	1	
7	1NN-84332-00	SPRING, SCREW	2	
8	1NN-84131-10	SCREW, RIM ADJUSTER	1	
9	1L9-84334-60	NUT, ADJUSTING	2	
10	3MR-84314-00	BULB, HEADLIGHT	1	
11	98506-06016	SCREW, PAN HEAD	3	
12	90201-062A8	WASHER, PLATE	3	

3MR821-9340

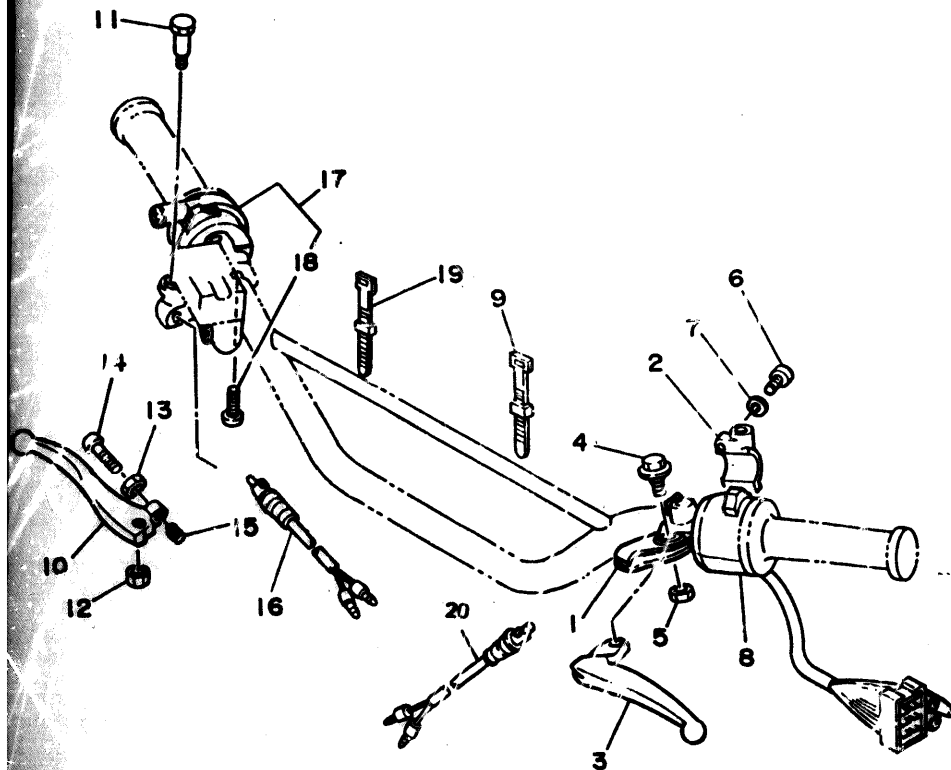
FIG. 35 TAILLIGHT

REF	PART NO	DESCRIPTION	QTY	REMARKS
1	3HL-H4710-00	TAILLIGHT UNIT ASSY	1	
2	3HL-H4520-00	LENS TAILLIGHT	1	
3	3HL-H4524-00	SCREW	2	
4	3HL-H4535-00	BULB 12V-5/21W	1	
6	5T8-H4736-00	DAMPER TAIL	1	
7	95303-06600	NUT	2	
8	90201-06812	WASHER PLATE	2	
9	90387-07391	COLLAR	2	
10	3HL H4517-00	WIRE HARNESS	1	



SMR1321-9350

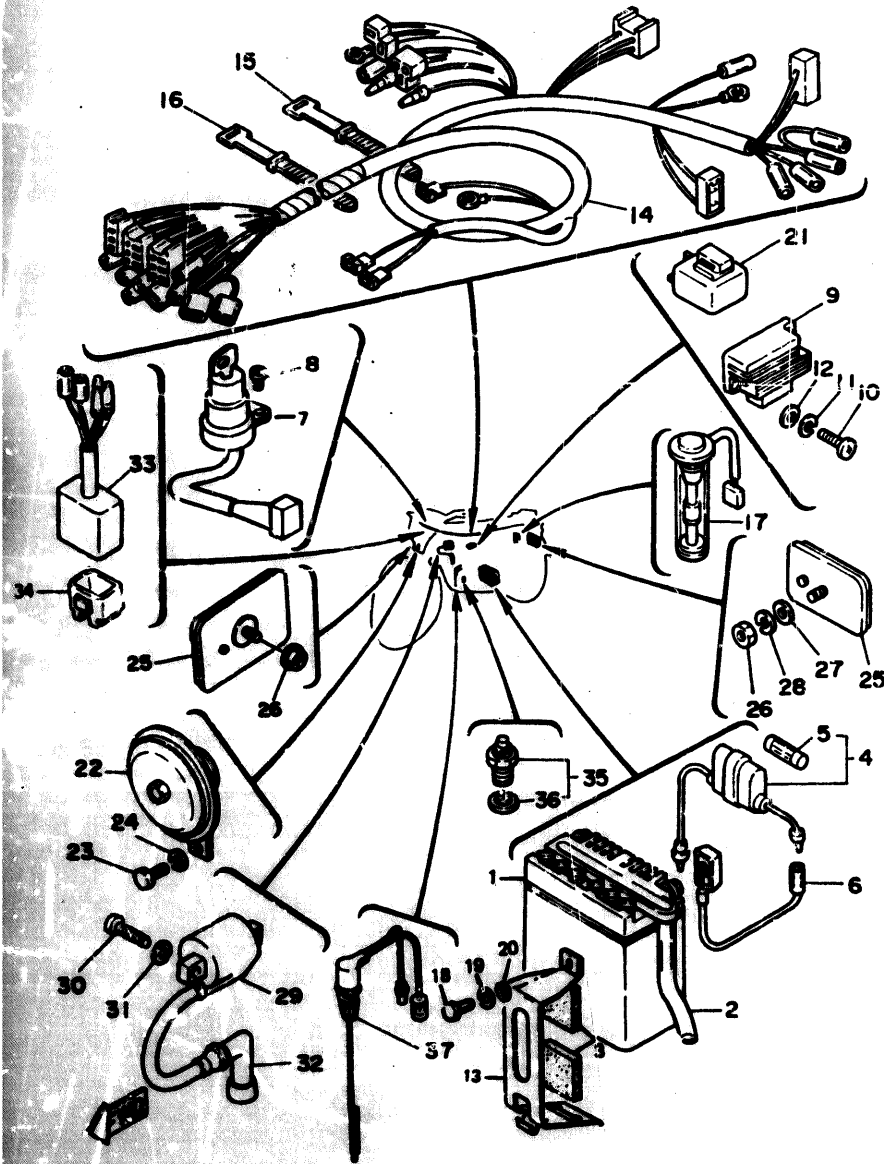
FIG. 36 HANDLE SWITCH LEVER



REF	PART NO	DESCRIPTION	QTY	REMARKS
1	1LN-82911-00	HOLDER, LEVER 1	1	
2	33G-82913-00	HOLDER, LEVER LOWER 1	1	
3	3RN-83912-00	LEVER 1	1	
4	90109-06799	BOLT	1	
5	95616-06100	NUT, U	1	
6	98506-05020	SCREW, PAN HEAD	2	
7	92906-05100	WASHER, SPRING	2	
8	3MR-83972-00	SWITCH, HANDLE 4	1	
9	5T8-H3936-00	BAND, SWITCH CORD	2	
10	3PN-83922-00	LEVER 2	1	
11	90109-062A8	BOLT	1	
12	95616-06100	NUT, U	1	
13	90170-06010	NUT	1	
14	90149-06153	SCREW	1	
15	90501-10312	SPRING, COMPRESSION	1	
16	1A0-83980-30	FRONT STOP SWITCH ASSY	1	
17	1R6-83976-01	SWITCH, HANDLE 1	1	
18	90157-05027	. SCREW, PAN HEAD	2	
19	5T8-H3936-00	BAND, SWITCH CORD	2	
20	3Y6-82917-00	FRONT STOP SWITCH ASSY	1	

3MR1321-9340

FIG. 37 ELECTRICAL 1



SMR1521-9370

REF	PART NO	DESCRIPTION	QTY	REMARKS
1	3HL-82110-00	BATTERY ASSY	1	
2	90445-08171	HOSE	1	
3	3HL-H2121-00	DAMPER BATTERY	2	
4	5T8-H2150-00	FUSE HOLDER ASSY	1	
5	5T8-H2151-00	. FUSE	2	
6	10W-82115-00	WIRE, PLUS LEAD	1	
7	3HL-H2510-10	MAIN SWITCH ASSY	1	
8	98901-04010	SCREW, BIND	2	
9	22J-81960-92	RECTIFIER & REGULATOR	1	
10	98501-05016	SCREW, PAN HEAD	2	
11	92901-05100	WASHER, SPRING	2	
12	92901-05600	WASHER, PLATE	2	
13	3HL-H2128-00	BRACKET, BATTERY	1	
14	3MR-82590-00	WIRE HARNESS ASSY	1	
15	5T8-H3936-00	BAND, SWITCH CORD	3	
16	5T8-H3936-10	BAND, SWITCH CORD	2	
17	3HL-85720-01	OIL LEVEL GAUGE ASSY	1	
18	97003-06012	BOLT	1	
19	92990-06100	WASHER, SPRING	1	
20	92990-06600	WASHER, PLATE	1	
21	29G-83350-20	FLASHER RELAY ASSY	1	
22	35R-83371-20	HORN	1	
23	97003-06012	BOLT	1	
24	92990-06100	WASHER, SPRING	1	
25	3G1-85130-01	REAR REFLECTOR ASSY	1	
26	95303-05600	NUT	1	
27	92990-05200	WASHER, PLAIN	1	
28	92901-05100	WASHER, SPRING	1	

# CONTENTS

## ENGINE

CYLINDER .....	B2
CRANKSHAFT, PISTON .....	B3
OIL PUMP .....	B4
INTAKE .....	B5
CARBURETOR .....	B6 - B7
EXHAUST .....	B8
CRANKCASE .....	B9
CRANKCASE COVER 1 .....	B10
STARTER .....	B11
CLUTCH .....	B12 - B13
TRANSMISSION .....	B14
SHIFT CAM, FORK .....	B15
SHIFT SHAFT .....	C2

## CHASSIS

FRAME .....	C3
FENDER .....	C4
SIDE COVER .....	C5
OIL TANK .....	C6
REAR ARM .....	C7

REAR SUSPENSION .....	C8
STEERING .....	C9-C10
FRONT FORK .....	C11
FUEL TANK .....	C12-C13
SEAT .....	C14
FRONT WHEEL .....	C15
FRONT BRAKE CALIPER .....	D2
REAR, WHEEL .....	D3-D4
STEERING HANDLE, CABLE .....	D5
FRONT MASTER CYLINDER .....	D6
STAND, FOOTREST .....	D7
COWLING 1 .....	D8
GENERATOR .....	D9
FLASHER LIGHT .....	D10
METER .....	D11
HEADLIGHT .....	D12
TAILLIGHT .....	D13
HANDLE SWITCH, LEVER .....	D14
ELECTRICAL 1 .....	D15-E2

## INDEX

NUMERICAL INDEX .....	M1 ~M2
-----------------------	--------



# CONTENTS

## ENGINE

CYLINDER .....	B2
CRANKSHAFT. PISTON .....	B3
OIL PUMP .....	B4
INTAKE .....	B5
CARBURETOR .....	B6 - B7
EXHAUST .....	B8
CRANKCASE .....	B9
CRANKCASE COVER 1 .....	B10
STARTER .....	B11
CLUTCH .....	B12 - B13
TRANSMISSION .....	B14
SHIFT CAM. FORK .....	B15
SHIFT SHAFT .....	C2

## CHASSIS

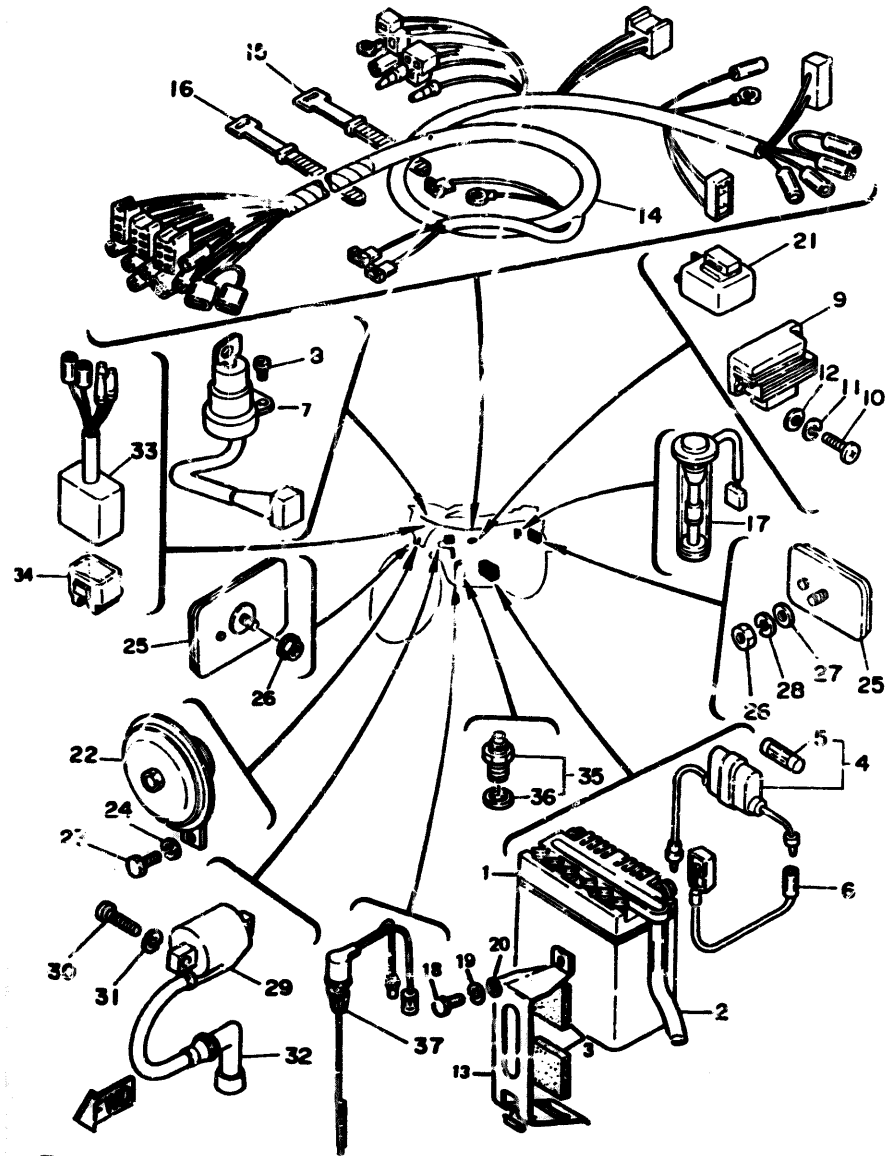
FRAME .....	C3
FENDER .....	C4
SIDE COVER .....	C5
OIL TANK .....	C6
REAR ARM .....	C7

REAR SUSPENSION .....	C8
STEERING .....	C9-C10
FRONT FORK .....	C11
FUEL TANK .....	C12-C13
SEAT .....	C14
FRONT WHELL .....	C15
FRONT BRAKE CALIPER .....	D2
REAR. WHEEL .....	D3-D4
STEERING HANDLE. CABLE .....	D5
FRONT MASTER CYLINDER .....	D6
STAND. FOOTREST .....	D7
COWLING 1 .....	D8
GENERATOR .....	D9
FLASHER LIGHT .....	D10
METER .....	D11
HEADLIGHT .....	D12
TAILLIGHT .....	D13
HANDLE SWITCH. LEVER .....	D14
ELECTRICAL 1 .....	D15-E2

## INDEX

NUMERICAL INDEX .....	M1 ~M2
-----------------------	--------

FIG.37 ELECTRICAL 1



REF	PART NO	DESCRIPTION	QTY	REMARKS
29	2JN-82310-M0	IGNITION COIL ASSY	1	
30	98501-06020	SCREW W/WASHER	2	
31	92990-06100	WASHER SPRING	2	
32	1J7-82370-00	PLUG CAP ASSY	1	
33	3MP-85540-00	C.D.I. UNIT ASSY	1	
34	3MP-H5546-00	BAND	1	
35	4AL-82540-00	NEUTRAL SWITCH ASSY	1	
36	341-82543-00	.GASKET	1	
37	1MK-H2530-V0	STOP SWITCH ASSY	1	

3M R1321-9370

# CONTENTS

## ENGINE

CYLINDER .....	B2
CRANKSHAFT. PISTON .....	B3
OIL PUMP .....	B4
INTAKE .....	B5
CARBURETOR .....	B6 - B7
EXHAUST .....	B8
CRANKCASE .....	B9
CRANKCASE COVER 1 .....	B10
STARTER .....	B11
CLUTCH .....	B12 - B13
TRANSMISSION .....	B14
SHIFT CAM. FORK .....	B15
SHIFT SHAFT .....	C2

## CHASSIS

FRAME .....	C3
FENDER .....	C4
SIDE COVER .....	C5
OIL TANK .....	C6
REAR ARM .....	C7

REAR SUSPENSION .....	C8
STEERING .....	C9-C10
FRONT FORK .....	C11
FUEL TANK .....	C12-C13
SEAT .....	C14
FRONT WHEEL .....	C15
FRONT BRAKE CALIPER .....	D2
REAR. WHEEL .....	D3-D4
STEERING HANDLE. CABLE .....	D5
FRONT MASTER CYLINDER .....	D6
STAND. FOOTREST .....	D7
COWLING 1 .....	D8
GENERATOR .....	D9
FLASHER LIGHT .....	D10
METER .....	D11
HEADLIGHT .....	D12
TAILLIGHT .....	D13
HANDLE SWITCH. LEVER .....	D14
ELECTRICAL 1 .....	D15-E2

## INDEX

NUMERICAL INDEX .....	M1 ~M2
-----------------------	--------

NUMERICAL INDEX

5M3-11111-00	B2	598-16321-01	B12	4L0-25862-00	D6	3HL-85580-00	D9	3HL-F1721-10-12	C5	3HL-F3319-30	D6	3HL-F6312-00	D5
5J1-11161-00	B2	131-16326-00	B12	55A-25867-00	D6	3HL-35720-01	D15	3HL-F1721-60	C5	3HL-F3340-10	C11	4AD-F6321-00	D5
427-11161-00	B2	241-16341-01	B12	3HL-25872-12	D6	3HL-E4103-00	B6	3HL-F1728-00	C13	3HL-F3360-00	C11	3MR-F6335-00	D5
1T9-11161-00	B2	451-16342-00	B12	5R2-25917-00	D2	3MP-F4104-00	B6	3HL-F172A-40	C13	3HL-F3370-00	C11	5T8-F6363-00	D5
4AD-11179-00	B2	132-16346-00	B12	34X-25919-00	D2	3HL-E4106-00	B6	3HL-F172A-10	C13	3HL-F3389-00	D6	5T8-F6393-01	D5
102-11181-01	B2	257-16351-00	B12	34X-25926-00	D2	3HL-E4112-00	B6	3HL-F172A-50	C13	5T8-F3416-00	C9	20L-F7211-00	D7
4AD-11311-00	B2	137-16356-00	B12	34X-25937-00	D2	3MR-E4116-00	B6	3HL-F172F-00	C13	3HL-F3435-10	C9	3MP-F7231-00	D7
4AD-11351-00	B2	353-16357-00	B12	3BN-26141-20	D5	3HL-E4125-00	B6	3HL-F172G-40	C13	3HL-F3441-10	C9	1NN-F7311-00-11	D7
2J2-11400-00	B3	257-16371-01	B12	2KF-26141-00	D5	3HL-E4126-00	B6	3HL-F172G-10	C13	3HL-F3451-10	C11	20L-F7411-00	D7
2U2-11412-00	B3	353-16396-00	B12	3TB-26141-50	D5	3HL-E4126-00	B6	3HL-F172G-50	C13	3HL-F3452-10	C10	20L-F7421-00	D7
2U2-11422-00	B3	353-17121-11	F14	3BN-26142-20	D5	3HL-E4126-00	B6	3HL-F172H-00	C13	3HL-F3453-10	C9	54Y-F8100-00	C3
260-11601-02	B3	353-17131-10	A14	2YK-26142-10	D5	3HL-E4137-00	B6	3HL-F172K-00	C13	3HL-F3454-10	C9	4AD-F8351-00-12	D8
260-11601-12	B3	353-17141-12	B14	3BN-26142-30	D5	3MR-E4142-00	B6	3HL-F172L-00	C13	3HL-F3457-10	C10	4AD-F8351-00-11	D8
260-11601-22	B3	353-17211-01	B14	434-26243-00	D5	3HL-E4156-00	B6	5T8-F1745-01	C6	3HL-F3459-10	C9	4AD-F8351-00-13	D8
5L3-11631-00-96	B3	257-17219-00	B14	1M1-26249-01	D5	3HL-E4168-00	B6	3HL-F174T-00	C5	3HL-F3469-00	C10	3HL-F8368-80	D8
517-11633-00	B3	367-17221-00	B14	55V-26280-00	D5	3HL-E4169-00	B6	3HL-F1751-00	C6	5T8-F3482-00	C9	3HL-F8368-90	D8
5L3-11635-00	B3	353-17231-00	B14	1E6-26342-00	D5	3MR-E4181-00	B7	5T8-F1771-00	C6	3HL-F4110-00-17	C12	3HL-F8368-A0	D8
5L3-11636-00	B3	353-17241-00	B14	17W-28173-00	C3	3MN-E4198-00	B7	3HL-F1778-00	C5	3HL-F4110-00-15	C12	3NC-F8391-00	C4
3R1-11651-01	B3	353-17411-10	B14	17W-28185-00	C3	4AD-E4301-00	B6	3HL-F179J-00	C5	3HL-F4110-00-16	C12	3NC-F8391-10	C4
257-11681-00	F	20M-17421-00	B14	NC1-48970-10	B8	3HL-E4312-00	B6	3HL-F179J-10	C5	3HL-F4146-00	B7	3NC-F8391-20	C4
29J-13101-00	B4	214-17468-00-09	B14	2AL-81313-M0	D9	3HL-E4331-00	B6	3HL-F179K-00	C5	3HL-F414H-00	C13	3HL-H2121-00	D15
3MT-13116-00	B4	353-17471-00	B14	22J-81960-92	D15	4AD-E4341-00	B6	3HL-F179K-20	C5	3HL-F414J-00	C13	3HL-H2128-00	D15
137-13137-00-10	B4	2AL-18101-01	C2	3HL-82110-00	D15	3MS-E4347-00	B6	3HL-F179K-10	C5	3HL-F4164-00	C13	5T8-H2150-00	D15
137-13138-01	B4	353-18120-00	C2	10W-82115-00	D15	3HL-E4349-00	B7	3HL-F179L-20	C5	26H-F4181-00	C12	5T8-H2151-00	D15
367-13146-01	B4	374-18141-00	B15	2JN-82310-M0	E2	3HL-E4371-00	B6	3HL-F179L-00	C12	5T8-F4182-01	C12	3HL-H2510-10	D15
248-13174-00	B4	214-18178-00	C2	1J7-82370-00	E2	3HL-E4375-00	B6	3HL-F179L-10	C12	3HL-F4186-00	C12	1MK-H2530-V0	E2
367-13174-00	B4	367-18197-00	C2	4AD-82540-00	E2	3HL-E4377-00	B6	3HL-F179L-20	C12	3HL-F4341-00	B7	3HL-H3310-00	D10
2A3-13175-00	B4	353-19511-01	B15	341-82543-00	E2	3HL-E4384-00	B6	3HL-F179M-00	C12	3HL-F4345-00	B7	5T8-H3312-10	D10
1E7-13176-00	B4	353-18512-01	B15	3MR-82590-00	D15	3HL-E4388-00	B6	3HL-F179M-10	C12	3HL-F4348-00	B7	5T8-H3313-10	D10
353-13178-00	B4	214-18531-00	B15	1LN-82911-00	D14	3HL-E4385-00	B6	3MP-F179M-20	C12	3HL-F4348-00	B7	3HL-H3330-00	D10
353-13552-01	B4	4U1-18549-00	B15	3CG-82913-00	D14	3HL-E4386-00	B6	3MP-F2110-01-1	C7	5T8-F4500-01	C12	3HL-H3331-00	D10
3MN-13565-00	B5	353-18547-00	B15	3Y6-82917-00	D14	3HL-E4392-00	B6	3HL-F2126-00	C7	3HL-F4501-00	B7	5T8-H3513-00	D11
5G1-13610-00	B5	214-18561-00	B15	29G-83350-20	D15	3MN-E443E-00	B7	5T8-F2141-00	C7	5T8-F4611-00	C12	5T8-H3524-00	D11
2A3-13613-00	B	353-18562-00	B15	35R-83371-20	D15	3HL-E4444-00	B6	3HL-F2153-10	C7	5T8-F4612-00	C12	3HL-H3550-10	D11
5G1-13616-00	B5	3MR-21521-00	C4	3MP-83510-00	D11	3MP-E4453-00	B5	3HL-F2210-00	C8	3HL-F4730-70	C14	5T8-H3936-00	D14
3MT-13621-00	B5	43F-21773-00	C5	3MP-83520-00	D11	4AD-E4703-00-11	B8	3HL-F2241-00	C7	3HL-F4730-80	C14	5T8-H3936-00	D15
3MP-1442-00	B5	401-22128-01	C7	10V-83565-00	D10	3HL-F4718-00-11	B8	3HL-F2243-00	C7	3HL-F4730-90	C14	5T8-H3936-10	D15
3HL-14420-00	B5	34X-22151-01	C7	3RN-83912-00	D14	5T8-E5415-00	B10	3HL-F2245-00	C7	3HL-F4731-70	C14	3HL-H4517-00	D13
3T2-14437-00	B5	5J0-23317-00	C11	JRN-83922-00	D14	5T8-E5618-00	B11	3HL-F2245-00	C7	3HL-F4731-80	C14	3HL-H4520-00	D13
3T2-14451-00	B5	156-23411-00	C9	JMR-93972-00	D14	JUM-E5620-00	B11	3HL-F2246-00	C7	3HL-F4731-90	C14	3HL-H4524-00	D13
5T8-14452-00	B5	122-23411-00	C9	1R6-83976-01	D14	5T8-E8111-00	C2	3HL-F2251-00	C7	3HL-F4739-00	C14	3HL-H4535-00	D13
3MT-14613-00	B8	156-23412-00	C9	1A0-83980-30	D14	5T8-E8113-00	C2	3MP-F2311-00	C7	3HL-F4742-00	C14	3HL-H4535-00	D13
353-15111-01	B9	122-23412-00	C9	1NN-84131-10	D12	3MR-F1110-00-13	C3	3HL-F3110-00	C11	3HL-F4830-00-11	C14	3HL-H4570-00	D13
4AD-15121-00	B9	34L-24184-00	C12	1NN-84131-10	D12	3MR-F1110-00-14	C3	3HL-F3111-00	C11	3HL-F5111-10-12	C15	5T8-H4736-00	D13
353-15362-00	B10	3HL-24311-00	C12	3MR-84314-00	D12	3MR-F1110-00-12	C3	3HL-F3114-00	C11	5T8-F5118-00	C15	3MP-H5546-00	E2
492-15387-00	B9	3HL-25104-10	C15	1NN-84315-00	D12	5T8-F1398-00	C14	3HL-F3119-00	C11	5T8-F5181-00	C15	59X-W0041-00	D6
5G1-15411-00	B10	3HL-25190-10	C15	3MR-84320-00	D12	5T8-F1511-60	C4	3HL-F3126-10	C11	5T8-F5311-10-12	D3	34X-W0046-02	D2
4U7-15416-00	B10	5J0-25304-00	D3	25G-84326-H0	D12	5T8-F1511-30	C4	3HL-F3129-00	C11	5T8-F5315-00	C15	34X-W0047-00	D2
4U7-15421-00	B10	3Y6-25351-00	D3	1NN-84332-00	D12	5T-F1511-70	C4	3HL-F3136-00	C11	5T8-F5315-00	D3	51L-W0048-00	D2
353-15437-02	B10	5R0-25355-00	D3	1L9-84334-60	D12	3HL-F1611-40	C4	3HL-F3145-00	C11	5T8-F5321-03	D3	34X-W0057-00	L2
3MT-15451-00	B10	492-25448-10	D3	3MR-84340-00	D12	3HL-F1611-10	C4	3HL-F3156-00	C11	5T8-F533A-00	D3	2JL-W2536-01	D3
3T2-15484-01	B9	3HL-25715-10	D2	4G1-84744-00	D11	3HL-F1611-50	C4	1NN-F3174-00-11	C9	3HL-F5371-00-11	L3	3HL-W0055-00	E7
353-15641-00	B11	3HL-25715-50	D2	34U-85110-00	J8	3HL-F1623-00-11	C4	3HL-F3191-40	C11	5T8-F5381-00	D4		
353-15651-00	B11	3HL-25715-60	D2	3G1-85130-01	D15	3MR-F1621-00	C4	3HL-F3191-30	C11	1MK-F5389-00	D4		
2AL-15660-00	E11	34X-25807-00	D2	33G-85132-01	C4	3MR-F1624-00-11	C4	3HL-F3192-00	C11	5T8-F5412-01	D3		
4U1-15664-00	B11	34X-25831-00	D2	29J-85132-C0	L8	3MR-F1685-00-11	C4	3HL-F3192-10	C11	3HL-F6111-00-13	D5		
248-15668-00	B11	34X-25845-00	D2	5G3-85520-M1	D9	3HL-F1711-50	C5	3HL-F3318-00	C9	5T8-F6241-00	D5		
353-16111-01	B12	2KF-25850-00	D6	3MP-85540-00	D6	3HL-F1711-10-12	C5	3HL-F3318-10	D6	5T8-F6242-00	D5		
5L3-16150-00	B12	2KF-25852-01	D6	3MR-85550-00	D9	3HL-F1711-60	C5	3HL-F331A-20	D6	5T8-F6261-00	D5		
122-16164-00	B12	55U-25854-00	D6	3MP-85560-00	D9	3HL-F1721-50	C5	3HL-F3319-20	D6	3HL-F6311-10	D5		
122-16164-00	B12												

# NUMERICAL INDEX

90101-06278	D3	90240-10069	C8	90560-17123	B12	93102-04361	B12	95701-08500	C3	98901-04010	D15
90103-08183	D3	90249-12008	D7	90560-12208	C15	93102-17187	B14	95701-05500	D8	98906-06010	B8
90105-10308	D2	90267-40076	C4	90560-12207	D3	93102-12106	C2	95706-06500	B8	99001-08600	B4
90109-06614	B5	90267-48014	C4	90580-05014	B4	93102-18008	C15	95811-00090	C3	99006-10600	B15
90109-06685	B14	90267-40110	D8	91401-25020	B15	93103-28011	B3	95811-00120	C3	99006-10600	C7
90109-06757	D2	90280-03017	B3	91401-25020	C8	93104-10085	B13	97001-06025	C9	99006-10600	C2
90109-08368	D4	90282-05005	B12	91401-30030	C15	93106-20002	D3	97001-06025	D8	99006-10600	C2
90109-08031	D7	90334-12005	B9	91401-20020	D4	93109-15001	B11	97003-06012	C4	99009-12400	B11
90109-06799	D14	90338-16029	B14	91401-30030	D4	93210-21190	B10	97003-06012	D15	99009-13400	B14
90109-062A8	D14	90338-09130	D3	91401-20020	D7	93210-99103	B12	97007-06012	D15	99009-13400	B14
90113-06013	B12	90338-09012	D5	91401-20020	D7	93306-20458	B3	97011-06010	B14	99009-16400	B14
90116-06026	B2	90340-12005	B9	91701-08038	D7	93306-20333	B14	97011-06020	C4	99510-12006	B9
90116-08804	D3	90340-14208	B15	92506-06014	C4	93306-30301	B14	97016-06025	B11	99530-10014	B10
90119-06014	B5	90386-18099	C7	92901-06200	B2	93306-301Y2	C15	97016-06020	C2	99530-10014	B10
90119-05001	B12	90387-205E9	B3	92901-05100	B4	93306-301Y1	D3	97016-06016	C9		
90119-06056	C3	90387-16126	B14	92901-06600	B5	93306-301Y0	D3	97016-06025	D6		
90119-06043	C6	90387-064T3	C4	92901-06600	D4	93310-41810	B3	97021-06030	C12		
90123-08046	D5	90387-06825	C12	92901-06600	D5	93310-11268	B3	97026-06030	B8		
90149-08094	C2	90387-12283	C15	92901-06600	D5	93430-10803	D7	97026-06014	C4		
90149-06223	C5	90387-12819	D4	92901-06600	D7	93440-10089	B14	97026-08014	C14		
90149-06011	C12	90387-12820	D4	92901-04100	D9	93440-10030	B14	97313-06016	B5		
90149-06194	D2	90387-06500	D5	92901-04100	D9	93440-12005	B15	97313-08016	B8		
90149-06153	D14	90387-225N2	D6	92901-12100	D9	93450-13022	B3	97313-08016	C9		
90157-05027	D14	90387-07391	D8	92901-12100	D10	93501-04011	C9	97506-06618	D6		
90159-06059	C7	90387-07391	D13	92901-05100	D15	93503-16010	B12	97706-40530	D10		
90159-06058	C7	90401-10034	D6	92901-05600	D15	93503-16010	C9	98109-14485	B15		
90170-12060	B12	90430-04004	B4	92901-05100	D15	93505-32002	B4	98501-06025	B5		
90170-08258	D3	90430-12207	B9	92906-06600	B5	93603-22028	B4	98501-06050	B9		
90170-10038	D5	90445-05278	B4	92906-06100	C4	93604-10011	B15	98501-06055	B9		
90170-12175	D9	90445-117E0	B8	92906-06600	C4	93604-08071	B15	98501-06025	B9		
90170-06010	D14	90445-09353	C6	92906-06100	C4	93606-14081	B15	98501-06035	D5		
90171-12015	C15	90445-09100	C12	92906-06600	C9	93811-10001	B14	98501-04006	D9		
90171-12015	B4	90445-08171	D15	92906-08600	C4	94170-218A1	C15	98501-05010	D12		
90179-12244	B12	90460-33087	B5	92906-06100	C9	94190-1P8A2	D3	98501-05016	D15		
90179-08148	D5	90460-51059	B5	92906-06600	C9	94225-21812	C15	98501-06020	E2		
90179-06106	D7	90464-14117	C12	92906-06100	C9	94232-18838	D3	98502-06016	B13		
90201-08624	B4	90467-10008	B8	92906-06600	C9	94330-21814	C15	98506-06016	B5		
90201-10534	B4	90467-08003	C6	92906-06100	C14	94332-18833	D3	98506-06040	B10		
90201-12106	B13	90467-08003	C6	92906-08600	C14	94416-21471	C15	98506-06045	B10		
90201-12575	C2	90467-08003	C12	92906-06100	D6	94418-18171	D3	98506-06035	E10		
90201-06067	C4	90468-02033	B4	92906-06100	D8	94580-52122	D3	98506-06040	B10		
90201-047A2	C4	90468-02033	B5	92906-05100	D14	94680-52001	D3	98506-06016	B10		
90201-00132	C4	90468-26038	B11	92990-03100	B5	94701-00248	B2	98506-06012	C13		
90201-002A6	C5	90480-01401	C5	92990-06100	B5	95303-06600	B2	98506-06016	D12		
90201-06059	C13	90480-12325	C5	92990-08100	B8	95303-05600	B4	98506-05020	D14		
90201-062A8	C13	90480-12053	D8	92990-06100	C4	95303-06700	B12	98511-04025	D9		
90201-10118	D6	90480-12053	D6	92990-06100	C4	95303-08600	C2	98511-04012	D9		
90201-14813	D7	90480-12053	D11	92990-10600	C7	95303-08700	D4	98516-06030	B10		
90201-044A2	D8	90501-02217	B4	92990-10600	C8	95303-06600	D4	98516-06020	B10		
90201-12535	D9	90501-20122	B12	92990-08100	C9	95303-06700	D5	98516-06030	B10		
90201-062A8	D12	90501-09232	B15	92990-06100	C12	95303-08700	D7	98580-03008	B5		
90201-06812	D13	90501-08410	C12	92990-08100	D4	95303-12600	D10	98580-04016	B7		
90202-05187	B8	90501-10245	D7	92990-06100	D4	95303-06600	D11	98580-04010	D9		
90202-05188	B8	90501-10312	D14	92990-06100	D15	95303-06600	D13	98580-04010	D10		
90202-06010	C12	90506-07066	B12	92990-06600	D15	95303-05600	D15	98701-05012	B15		
90202-12015	B12	90506-18288	D3	92990-06100	D15	95601-10100	C7	98701-06012	E15		
90208-12015	B12	90506-20047	D7	92990-05200	D15	95601-06100	D3	98701-06018	C14		
90209-18112	B3	90508-26136	B11	92990-06100	E2	95616-06100	D14	98701-05016	E9		
90209-13185	B14	90508-32054	C2	93101-10090	B4	95616-06100	D14	98706-04012	D6		
90240-10072	C8	90508-32354	D7	93102-20009	B3	95701-06500	B6	98901-04008	B4		